



PMPO

Spring 2010 - Volume 21

The Palomar Mountain Planning Organization

Board Members: Terri Bailey, Heather Beer, Glenn & Cecilia Borland, Robert Carlyle, Mike Chesney, Donna Dose, Bruce Graves, Elizabeth Getzoff (John Tainer, alternate), Susan Humason, Scott Kardel, Michael Pique, Alan Serry, Linda Thorne, Martha Vargas

A Message from the Chair

Last year on the mountain, though not as exciting as years past, has seen continued progress on various fronts. Several long-running projects have come to completion. One major example is the Community Center. Through the long patience of Earl Walls, and his band of volunteers, the interior of the Center is complete, furniture and all. Outside painting and minor landscaping will commence when the weather is more cooperative. Again, many thanks to all those that have participated in this labor of love and devotion to the mountain.

The San Diego 2020 Plan continues to wend its way through the system. The PMPO has been keeping up with developments. Many thanks to Martha Vargas for her vigilance in this area.

You may have noticed the "rumble strips" running along the center of South Grade, this is the work of a much prodding Alan Serry. The hope was that this would slow down some of the traffic, which it seems to have done, but also help in times of heavy fog.

Alan continues to work with the CHP and other county entities to "tame" our winter snow bird traffic snarls. Getting around on the mountain with so many additional folks after a snow is nigh on impossible and dangerous as emergency vehicles are unable to move at all. Again, much thanks for Alan's continued hard work.

Mike Pique, our faithful scribe, again has done exemplary service in taking and delivering the minutes. He is also continuing work on the Section 14 survey problem. Thanks Mike!

One of our new board members is Mike Chesney. He fills in a number of roles that have been lacking on our board. Though in real life he baby-sits "grown up executive board members" his work and contributions to the board have been numerous. We now have an autonomous web site (www.PMPOInfo.com) that is a single-point source of information on the activities of the PMPO. He also supplies much-needed discipline during our meeting and keeps us on track. Besides that, with his experience with high level boards, he is helping to tighten up the language of our By-laws.

Again many thanks to Mike and his wife Tracey for jumping in with both feet in a myriad of areas.

This message is rapidly becoming a tome so I will wind it up. Thanks to Susan Humason for her work in compiling all of the articles for this newsletter.

Thanks also to Bruce Graves who fills in my shortcomings and is my right-hand man, thanks!

I also want to extend my thanks to all that have served during my tenure and have gone on. Earl Walls, who has served both on and off the board in many ways, Bonnie Phelps who has served on the board for many years, Rob Hawks for his work with various parties on water and well issues, and Robert O'Neil for his time.

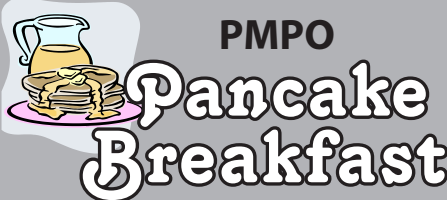
Also thanks to all of the other people that have contributed to the activities of the PMPO, a hearty thanks from all.

Glenn Borland
PMPO Chairman
chair@pmpoinfo.com



Mark Your Calendars

**All Mountain
Residents & Visitors are
Welcome to Attend...**



**PMPO
Pancake
Breakfast**

Saturday May 29, 2010

Palomar Mtn Vol Fire Dept. Station

8am-11am

**The Annual Meeting
follows Breakfast.**

The Community Center of Palomar Mountain *by Tracey Chesney*

The remodel and renovation of your new Community Center of Palomar Mountain (CCPM) is now complete.

Earl Walls, a long time resident on Palomar Mountain and the man in charge of overseeing the remodeling project, worked tirelessly to see this project completed. The \$50,000.00 grant for the remodel that was secured by Fire Chief George Lucia, excluded allowing paid labor. Therefore 100% of all the work performed on the house was required to be voluntary. Earl credits the many volunteers who gave their time and expertise to this project. Palomar residents and the Community in general cannot begin to express their appreciation for all that Earl Walls has done and continues to do.

The Community Center Grand Opening was held on March 20th 2010. This exciting event was celebrated with a St Paddy's Day Dinner and Auction. This event signified the opening of the Center to the public and also helped raise funds to furnish the newly completed Center. Over 130 residents, neighbors and friends of the Palomar Community attended,

(Continued on page 3)

Table of Contents

Article	Page
Message From the Chair	1
The Community Center of Palomar Mt.	1
Treasurer's Report	2
Fire Safe Council Receives Grant	2
PMPO Website News	2
PMVFD Report	4
What's New at Palomar Observatory	5
Community Emergency Resonse Team	5
PMPO Soliciting Board Members	6
Well Level Monitoring	6
Community Fire Safety	6
Light and Life, Palomar Mountain	6
Palomar Christian Confernce Center	7
Palomar Mountain Community Church	7
Community Tidbits	8
Traffic Safety Update	10

**Palomar Mountain
Planning Organization
(PMPO)
Box 145**

PALOMAR MOUNTAIN, CA 92060-0145

This newsletter is produced annually
and distributed in May of each year.

Without the help of many volunteers,
this newsletter would not be possible.

Coordinator: Susan Humason

Editors: Elizabeth Getzoff & Michael Pique

Article Contributors:

Glenn Borland, Alan Serry, Robert Carlyle, Doug Lande,
Ken Cross, Scott Kardel, Bonnie Phelps, Bill Leininger,
Cliff Kellogg, Andrew Kish, Tracey Chesney, Matthew
Currie, Michael Pique

Assemblers:

Thanks go out to the many individuals that help each
year with the assembly and mailing of the newsletter.
They all make it possible to get the newsletter out on
a timely basis.

If you have any information that you would like to
contribute to future newsletters, please email the
information to:
dayoutings@earthlink.net - attn: PMPO Newsletter

PMPO

Treasurer's Report

Jan 1, 2009 to Dec 31, 2009

by Alan Serry, Treasurer



Balance Forward		\$42,522.86	
Income:			
Donations	\$1,915.00		
Pancake Breakfast	\$452.00		
Advertising	\$250.00		
Interest	<u>\$95.73</u>		
Total Income			\$2,712.73
Expenses:			
Newsletter	\$636.59		
Pancake Breakfast	\$431.15		
Postage	\$330.20		
General Expenses	\$54.00		
Materials (Community Center)	<u>\$5,500.00</u>		
Total Expenses			\$6,951.94
Ending Balance			\$38,283.65



*A big thank you to Donna Dose for her many years of service
in conducting the Annual PMPO Pancake Breakfasts.*

PMPO Website News

Thanks to Mike Chesney for all his help in developing our new PMPO
website. On this site, you can access information such as Board meeting
minutes, Board member contact information, by
laws and other useful information to keep you
abreast of PMPO issues.

Check out www.PMPOinfo.com

Great Job Mike!



Sign up for direct communications from your PMPO
<http://www.PMPOinfo.com/Pages/PMPOsubscription.htm>



Fire Safe Council Receives Grant!

by Robert Carlyle

Palomar Mountain Fire Safe Council has had their grant
request approved for the
2010 season for \$250,000.
That means that there are
funds available for fire hazard reduction
on private property on a co-pay basis.
Those interested in having work done
on their property please contact Robert
Carlyle at 760-742-1891 for an on-site
evaluation and sign-up.



The Community Center of Palomar Mountain, continued

and the Center was successful in raising more than \$5,500.00 for the furniture and future running of the Center. Earl Walls was presented with a plaque, thanking him for his hours of service to the Community.

On March 21st a new Board of Directors was elected for the Community Center of Palomar Mountain: Chairperson-Bruce Graves; Vice Chairperson-Tracey Chesney; Secretary-Tricia Lucia; Treasurer-John Lesac; Board Member-Bernadette Madison.

The CCPM has many exciting Community events on the horizon. It is hoped the Center will be used by the Community for meetings, group gatherings and as emergency shelter should it ever be necessary. Stay informed about up-coming Community Events by sending your email address to traceychesney@yahoo.com or by calling 949-291-7980.

You can also visit our site at: www.palomarcommunity.wordpress.com.
To schedule use of the Center, please contact Bruce Graves at 760-742-3027.



PMPO Needs Your Financial Support...

All property owners, residents, and any parties interested in the Palomar community are members of the Palomar Mountain Planning Organization. PMPO is recognized by both Federal and State Taxing Authorities as a tax-exempt organization. This means that your gifts are income tax deductible.

The Palomar Mountain Planning Organization (PMPO) studies and tackles issues of importance to Palomar Mountain, its residents, and visitors. Your financial support represents the Mountains' ability to make its voice heard and have its concerns expressed to the applicable local government agencies.

Palomar Mountain Planning Organization -- 2010 Contribution --

RETURN TO:

PMPO, Box 145

PALOMAR MOUNTAIN, CA 92060-0145

PMPO IS RECOGNIZED BY FEDERAL

AND STATE AUTHORITIES

AS A TAX EXEMPT 501-(c)3 ORGANIZATION.

YOUR CONTRIBUTIONS ARE 100% TAX DEDUCTIBLE.

NAME: _____

ADDRESS: _____

PHONE: _____

EMAIL: _____

I AM CONTRIBUTING: \$ _____

**We depend on
Your Support.
Please,
Give Generously.**



Report from the Palomar Mountain Volunteer Fire Department *by Cliff Kellogg*



There have been lots of changes and improvements happening around the Palomar Mountain Volunteer Fire Department during the last year. Have you noticed the portable office trailer has finally been moved from the Summit and is set up behind the station? It was donated by Earl Walls and will be utilized as an office and bunkhouse. On top of the station roof is a 1950's air raid siren donated by the City of Vista. The siren is the first of several Community Alert System sirens that we hope to have installed in strategic areas around the mountain to alert the community in the event of an extreme emergency. The Smoky Bear sign by the flag pole, along with an identical sign at the Forest Service kiosk at the Summit, was purchased through grant funds acquired by your fire department in partnership with the U. S. Forest Service. The flag pole area was dressed up with the help of the Boy Scouts with more improvements coming soon. Have you been inside the new Community Safety Center building yet and seen all the work the community members have accomplished? The Community Center has been completed inside and furnished. The only thing left is outside paint. It's been a busy year.

Recently we were brought under the auspices of the San Diego County Fire Authority. At the request of other county volunteer fire departments, your Board of Directors and Fire Chief George Lucia have taken the lead in working out new contract negotiations for all the volunteer departments. We have been in meetings with Supervisor Bill Horn, County Fire Authority leaders, and other fire department boards and chiefs to ensure that the contracts are fair and equitable for all.

Our partnership with the county has allowed us to participate in more certified training programs, like vehicle extrication, Fire Control 3, EMT training, hazardous material training, driver/operator and wild-land training. New members are required to complete a background investigation, complete a full, intensive physical, and attend a required 96 hour academy, all paid for by the County of San Diego. The county has realized the benefits of the back country volunteer fire departments and is doing all it can to support them with training and qualified personnel. You currently have 19 members on your fire department, including 9 EMT's and 8 first responders. Last year we responded to 134 calls.

You may have noticed cars parked out front and lights on inside the Community Center in the evenings. We are staffing the station with duty crews as often as possible, including overnight, to help cut down on response time for emergency calls. The Fire Authority is paying stipends to individual volunteers throughout the county for this additional service. Our firefighters are using the Community Center as temporary quarters until our portable office trailer is set up for the crews.

When we move the station office into the portable building the current office space will be turned into a communications room with upgraded antenna and radio systems, some of which are already in place. The communications room will fill an important role, especially during fires or weather events. Ham radio, county communications, and improved communications with the Palomar Observatory, Palomar Christian Conference Center, the State Park, and the Sixth Grade Camp will enhance our ability to cover Palomar Mountain with emergency communications.

The Department is eligible for Federal Excess Equipment and has recently taken possession of an ex-Forest Service Type 4 Engine with pumping abilities, large cabinets, and high ground clearance. We are in the process of setting this vehicle up as a standby department vehicle and CERT response rig, allowing our 33 member CERT team to perform their duties in an emergency and give us an additional brush engine, if needed.

The Palomar Mountain Volunteer Fire Department continues to evolve and grow and all of us appreciate the support we receive from you. Being a member of the department is challenging, and if you're up to a challenge and would like to become an active member please stop by or call for information. It's a great way to serve your community, meet new people, and learn new skills. CERT is another possibility for those who can't commit to regular membership but would still like to contribute. We still train on Monday nights starting at 6:00 pm. During inclement weather we conduct medical training and classroom work indoors. As the weather warms up and the days get longer, expect to see us around the mountain conducting structure fire fighting training and wild-land drills. Everyone is welcome to stop by and observe training. Also be sure to check out our website at www.palomarfire.org where important information and updates are always available. Thanks again for your support and have a safe and great summer.

Clifford Kellogg
Battalion Chief
Palomar Mountain Fire Dept.
Palfirebc79@gmail.com



21610 Crestline Road
P.O. Box 235
Palomar Mountain, CA 92060
(760) 742-3701 — FAX: (760) 742-0574

What's New at Palomar Observatory

by Scott Kardel

It has been another busy year at Palomar Observatory. Astronomical research continues nightly and the number of visitors to the observatory continues to be strong.

Earlier this year the Hale Telescope got a tune-up as 36 mechanical supports for the 200-inch mirror were removed and cleaned. Over 1,400 bearings were replaced as a part of the project. After a five-week shutdown, the team returned the telescope back to action in March, leaving it possibly in better shape than ever before.

A brand new instrument for the 200-inch telescope, the Cosmic Web Imager, saw first light last July. A research team from Caltech built the instrument, which is being used to probe the matter located between distant galaxies. Results should give astronomers a look into the early universe and the nature of its unknown constituents: dark matter and dark energy.

Last October as NASA deliberately crashed its LCROSS probe into the Moon

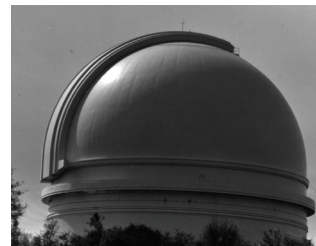
to hunt for water, the Hale Telescope used its adaptive optics instrument to take the sharpest images of the impact site of any telescope on the planet. Later in the year, Palomar astronomers announced the discovery of a new dwarf star orbiting a star in the handle of the Big Dipper. In April it was announced that they had used a new technique to take direct photographs of planets that orbit another star.

The new Palomar Transient Factory survey taking place with the 48-inch Samuel Oschin Telescope is in high gear. They take a wide-field image of the night sky every 90 seconds all night long and, on average, find a new stellar outburst every 17 minutes.

If you want a closer look at the observatory you might want to take one of our guided tours of the 200-inch Hale Telescope. They are given every Saturday & Sunday from April through October at 11:30 a.m., 1:00 p.m., and 2:30 p.m. Tickets are sold in the gift shop.

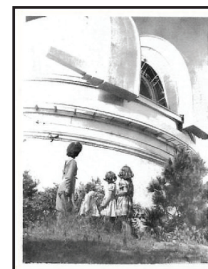
Remember it isn't just the lights of the cities that have an effect on the observatory. There are far fewer outdoor lights on the mountain, but they are much closer to our

telescopes. Please turn off any unnecessary lights. Make sure that they are pointed downward and only use as much light as you really need.



For more information on the observatory visit our website at:
<http://www.palomar-observatory.org>

The observatory is on Facebook too, so look for us there.



Community Emergency Response Team (CERT) *by Bill Leininger*

The past year has been another active one for the Palomar Mountain Volunteer Fire Department CERT. Highlights include:

- Training 18 more members, primarily from the Observatory
- Expanded communications ability with more HAM operators
- Distributing more Barricade Gel to other CERT's and renewing our supply
- Several information distribution events in neighborhoods and around the mountain
- Hosting a Fire Extinguisher Training activity at the annual Fire Dept Barbecue, at which 40 community members learned to safely use a fire extinguisher on a real fire.
- Activation for 4 days to help the PMVFD during the snow storms
- Supporting two San Diego County CERT Exercises by sponsoring the Fire Suppression Practice Station
- Recent acquisition of a "retired" Forest Service emergency vehicle, that we've just started to work on for rehabilitation and improvements

For those of you think it's a good time to prepare for an earthquake, here are some resources to help you get started:

- www.readysandiego.org
- www.earthquakecountry.info
- www.shakeout.org

Look for our booth at the PMPO Pancake Breakfast, where we'd be happy to share more information with you about emergency preparedness.

Bill Leininger, bill_leininger@alumni.williams.edu, ph – 760-807-6923



PMPO Soliciting Candidates for May Election of Board of Directors

The PMPO Board consists of 15 volunteers, five of which are up for election every year. These elections occur during the Annual Board Meeting following the Pancake Breakfast. The next Board meeting will be held Saturday at 11:00 AM, May 29th 2010.

Membership on the PMPO Board is open to any individual resident, property owner, or business person in the Palomar Mountain area of San Diego who wishes to contribute time and effort to achieve the purposes of this Organization. Members may be elected for more than one consecutive term. Board members serve without compensation. Board members must meet the attendance requirements as stated in the PMPO By-laws article 7.6 <http://www.PMPOinfo.com>. The Board meets a minimum of four times a year.

A description of the PMPO and its various Committee activities, Articles of Incorporation, and By-laws can be viewed on the PMPO web site, www.PMPOInfo.com.

This year, five current Board seats expire. New or re-elected Board members will serve three-year terms, expiring in 2013. There is also one vacant position to be filled, expiring in 2012. This results in six seats up for election. The following seats are up:

- 1) Bruce Graves (term expires 2010)
- 2) Scott Kardel (term expires 2010)
- 3) Susan Humason (term expires 2010)
- 4) Terri Bailey (term expires 2010)
- 5) Donna Dose (term expires 2010)
- 6) Robert O'Neill's vacancy (term expires 2012)

Glenn Borland
PMPO Chairman
chair@PMPOinfo.com



Well Level Monitoring *by Michael Pique*

The PMPO wants to track water levels in wells on Palomar Mountain to be able to gauge effects from the pumping planned by the La Jolla Indian Reservation at milepost 9 on the East Grade Road.

Mike Probert, System Operator for the Palomar Mutual Water Company, is now measuring levels in seven private wells about every two months.

We would like more well owners to give the PMPO permission to monitor their wells, especially on the south side of Crestline Road and the east side of Birch Hill.

If you are willing, please call Michael Pique at (858) 354-4391 or email wells@PMPOinfo.com. Thank you.

Community Fire Safety *by Doug Lande*

The south-facing slopes and south edges of Palomar Mt. are some of the most dangerous wild-land fire zones in San Diego County. We lost several houses in this area during the Poomacha Fire; one was a cement product sided house; one was a house that was sprayed with a gel fire retardant. People are discouraged from building in these most dangerous areas, just as they are discouraged from building in a flood plain. The California Department of Forestry and Fire Protection (CAL FIRE) classifies most of Palomar Mountain within a very high fire hazard severity zone. Therefore, very stringent Wildland-Urban Interface building codes are applied to housing construction in these areas, and the County will approve construction permits only if the location complies with strict safety and access requirements. In my opinion, these areas should be left to fire and nature, and firefighters should not be expected to go into these areas to provide fire protection.

What's your opinion? Come to our Fire Board and PMPO meetings and talk about it.

Palomar Mountain School Light and Life

Our Little Mountain School

by Andrew Kish

It's been a great year at Light and Life, Palomar Mountain! Last year we finished up the school year with only three students; this year, however, we grew to 11 students ranging from Kindergarten through 9th grade! The majority of these students are mountain residents, but four students drive up from Valley Center. Although we began the year under-funded, we were able to raise enough money to keep the school open because of some generous donors.

This year's class has done a great job. Several of our students have completed this year's curriculum entirely and can now work on next year's curriculum! We have had many adventures exploring the mountain, as well as "adventures behind the scenes" at the Wild Animal Park. We are very thankful for the blessing this community has been to us. Be sure to check out our blog at www.lifeonthemountain.wordpress.com.



Palomar Christian Conference Center

Palomar Christian Conference Center (PCCC) is blessed to be a part of the wonderful community in and around Palomar Mountain, California. There is an overwhelming sense of community and connection that comes with living and working together in such a beautiful, culturally rich, and diverse location.



PCCC has many exciting activities and camps for young people from our community to come and participate in this spring and summer. To highlight two, consider our sought-after Girl's Horse Camps. We offer three Junior weeks (age 10-12) and two Senior weeks (age 13-17). Each week includes six days packed with horse lessons, a "showdeo," vaulting, mountain rides, grooming, swimming, archery, hikes with cookouts, and much, oh yeah, much more!

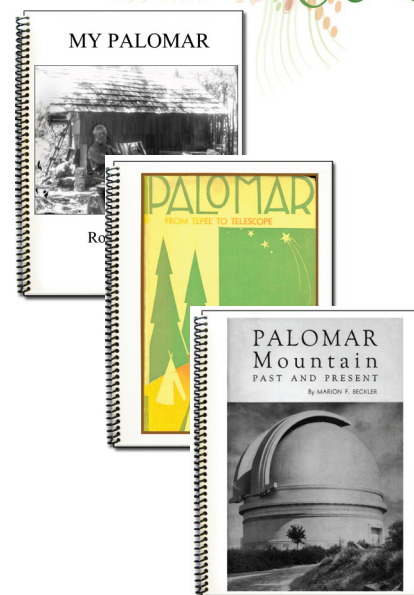
To go along with this, guys should consider Outdoor Adventure Camp. This is a packed "out of the box" program for guys (age 11-14) who want a week of adventures and memories! Within each of the four offered weeks, hiking, fishing, shelter-building, challenge courses, archery, great food, and many other "back to nature" activities will abound.

For more info on costs, exact weeks, registration, our statement of faith, etc., go to our web site at www.pccc.org. You may also contact our office directly at 1.800.833.1444.

Palomar Christian Conference Center recently has brought a new Executive Director on staff. His name is Ken Cross. Ken is a native of San Diego and is very excited to be back in his old stomping grounds. He and his wife Peggy were staff members of Hume Lake for many years. They come to PCCC following a twelve year pastoral position in Bakersfield. Please come by the camp to meet Ken and Peggy, reacquaint yourself with the conference grounds, or simply call to say hello. Please, let us meet your camping and conference needs!



PALOMAR MOUNTAIN HISTORY BOOKS FOR SALE



Available at
Palomar Mountain
General Store
or online at
www.dayoutings.com



Palomar Mountain Community Church

*'They devoted themselves to the apostles' teaching and to the fellowship
to the breaking of bread and to prayer.' (Acts 2:42)*

This verse from the New Testament describes the congregation of Palomar Mountain Community Church. Our focus is the Bible – we study it, and seek to apply it to our daily lives; our goal is to grow in love for one another; we pray for one another; and on the first Sunday of the month we observe the Lord's Supper, remembering Jesus' death for us, and enjoy a potluck meal together after the service.

Everyone is welcome to join us on Sunday mornings, at the Observatory Rec Center. The coffee is on at 9:30am and the service begins at 10:00am.

You can access recent sermons on the church's website: www.palomarmcc.com.

You can also sign up to receive a weekly email which will keep you up-to-date on news, events, prayer requests, and updates from missionaries supported by the church.

Matthew Currie, Pastor - (760) 738 2638
mpcurrie@sbcglobal.net
Palomar Mountain Community Church
P.O. Box 25, Palomar Mountain, CA 92060



Community Tidbits... *from Bonnie Phelps*

The NEW Palomar Mountain News Broadcast

Since 1998, property owners and residents have been able to subscribe to a free e-news broadcast. Serving the Mountain in a way similar to a newspaper, you receive messages to keep informed of ALL the happenings of our community. It is now in a new format so go to www.palomarmountainnews.com and click to subscribe. You can also scroll through the archives with lots of photos and catch up on the latest happenings of your favorite mountain!

Not getting the Mountain News? Change your e-mail address lately? Someone occasionally tells me that they are missing the news. If you subscribed in the past but are not receiving the Mountain News, adding my e-dress to your "white list" or safe sender list can do the trick, but maybe you changed your email address. Simply subscribe through www.palomarmountainnews.com and you should be all set.



State Park is Open

After being closed for the winter, the Palomar State Park is open again. Have you seen the Indian grinding stones at Silvercrest Picnic area? Dozens of them! And, some magnificent, huge old trees to enjoy. There are many miles of hiking trails, great camping sites, and good trout fishing in Doane Pond with some great historical sites to discover and lots more right in our own back yard! Visit them online at www.parks.ca.gov and click on San Diego County.

High Point and Boucher Lookouts

A big thanks goes to Brad Ells for heading up a huge restoration project for High Point Lookout. He and his team were trained and now staff High Point as a set of eyes watching for 'smokes'. Brad volunteered to start cleaning up Boucher Lookout a couple months ago with a dream to do his part to make that operational again too. Check out his great website at www.socalfirelookouts.org and you can also see recent photos of Boucher at www.palomarmountainnews.com



Would you like to cut wood?

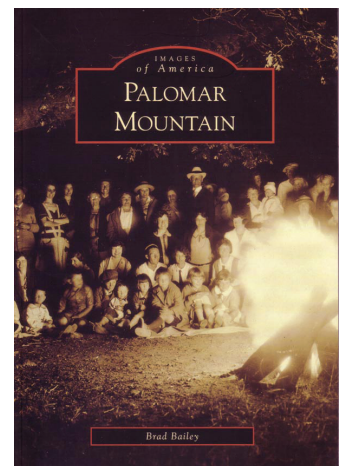
If you are interested in cutting your own firewood, there is a lot of downed wood available. You can get some dry oak for this coming year but, most is green so you cut now to let it season a year or so. Plan ahead! Just get in touch with me, I will connect you and your chain saw with the land owner. You get some great firewood and it helps clean up some property at the same time! (760) 742-1742 Free firewood is also periodically available to Mountain Residents in the Parking Area of the Fire Station, to the left of the Community Center.

Burn Permits

A couple wind and ice storms this winter brought down a tremendous amount of branches and some trees too. Wondering what to do with all the trimmings after 'parking up' your property? Would you like to have a campfire or burn your cut brush? A permit is required. Permits are available only when the U. S. Forest Service deems it is safe. After a rain or snow is often a good option. Call the US Forest Service Lake Henshaw station (760) 782-3472, or Ramona office (760) 788-0250 to help keep our forest green and fire safe.

New Palomar Mountain Book

Hot off the press! Thanks to Brad Bailey for putting together a wonderful new book! It touches on elements of Palomar history that have never before been in print with over 200 photos. You can pick up your book and a few for gifts at the General Store or look for them at mountain events or online at amazon.com. All author's proceeds from sale of the book are being donated to PMVFD. Cover price \$21.99. The author would be pleased to autograph it for you too - give Brad a call 760 742-1859. See more at www.mypalomarmountain.com/books



More Tidbits...



Mystery Box of Family Slides

An old box of slides was left at our door and I don't know what cabin they are from. (Did you?) It is a treasure of wonderful family photos beginning in the 1950's. I think there is someone who would appreciate the wedding and baby photos especially. We found only a few names written on the slides: "Llewellyn Lundy for Bugler, Gay Hewellyn, Pajareses, Dick's woodwork, Mabel's School project, Claude and Virginia". If they ring a bell, please let me know. Looks like the little baby girl was born the same year I was in the early 1950's and one year she got a shiny new bicycle for Christmas! Very special photos! Call to claim 760 742-1742

Other Community Services

Need a contact for people and companies that service Palomar Mountain? If you are looking for an appliance company that will deliver up here, wondering what to do with your debris now that the dump closed, or need someone for that project that you have in mind, check out www.palomarproperties.com/yellowpages. Do you have something you would like to add? Additions and corrections are always welcome. bonnie@bonniehelps or 760 742-1742.

There are lots of new folks on the Mountain these days! Meet your New Neighbors at our ever-growing page www.palomarproperties.com/newneighbors

Thinking of having your cabin or home as a vacation rental? I'm glad to provide a free webpage and hosting at www.palomarproperties.com/rentals

Considering using the Community Center for a group activity? Call Bruce Graves 760 742-3027 or visit www.palomarcommunity.wordpress.com.

Want to stay informed with Mountain events and happenings? Check out www.palomarcommunity.wordpress.com.

Community Notice Boards... There are a number of notice boards on the Mountain designed to keep both visitors and residents up to date with community information. Some are located at: outside the General Store, outside and inside at the Post Office and out front of the Fire Department.

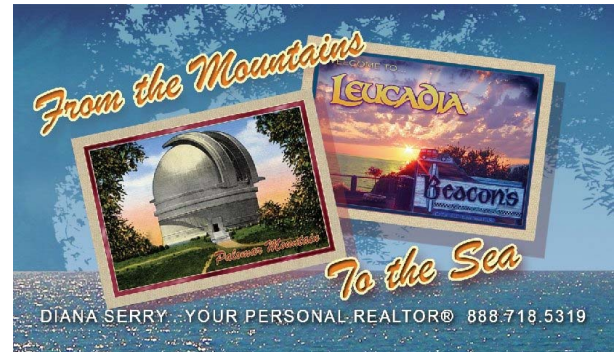


DREAM BUILDERS

From the Mountains to the Sea...

Building YOUR DREAMS since 1973

Contact Alan Serry direct at 760-742-0444
alserry@msn.com



DIANA SERRY

760-742-2333

www.dianaserry.com

REPRESENTING PALOMAR FINANCIAL REALTY & MORTGAGE

Bailey's Palomar Resort

Since 1888

Camping • Lodging • Events



For over a century now, folks have been coming up to Bailey's for a special slice of San Diego's back country. Bailey's sixty-acre mountaintop environment is a unique blend of cool forest and rich meadow.

The historic General Store, Dance Hall, and the newly restored Hotel provide an authentic look and feel to a valley that has changed little over the last 100 years.

Lodging at the Bailey House, camping, and cabin rentals are available.

Let Us Help You Plan Your Next Event

760-742-1859

www.BaileysPalomarResort.com



Traffic Safety Update

by Alan Serry, PMPO Traffic Safety Officer

Snow Emergency Plan

This January 2010 with the closing of Palomar Mountain State Park, Palomar Observatory, Palomar Mountain County Park and Forest Service campgrounds, the residential areas of Palomar Mountain were overwhelmed with visitor traffic to the point of gridlock.

CHP, Sheriff, and Forest Service staff did their best to move traffic and prohibit unsafe parking. The traffic conditions prevented Palomar Mountain Volunteer Fire Department from being able to access the residential neighborhoods.

With snow on the ground from an early spring snow, an interagency meeting was held in April to formulate a SNOW EMERGENCY PLAN. PMVFD, CHP, Sheriff, Forest Service, Palomar Observatory and San Diego County Traffic Engineering met and shared ideas. The agencies took our concerns seriously and the spirit of cooperation between the agencies was encouraging. Early presence, (CHP, Sheriff and Forest Service enforcement), on the mountain is crucial to maintaining order before traffic gets out of control.

Some of the ideas that were discussed at the meeting:

- **Road Closures**

Closures are difficult because of public access requirements. Closures may be used only when there is a serious safety issue.

- **Metering** (Allowing a certain number of vehicles at one time)

This procedure is sometimes in place on Mount Laguna. We can possibly try this on Palomar Mountain. To be effective, it is a good idea to have ID showing you are a resident or property owner on Palomar Mountain. We have very limited parking on Palomar Mountain and are looking into finding our official capacities.

- **Chains**

When road conditions warrant, existing 'chains required' laws will be enforced. Remember these laws apply to all, residents included. (Carry Chains)

- **Signs**

Residents Only signs may be used at Crestline and Bailey Meadow roads but are not enforceable.

No Parking signs may be allowed by traffic engineering as requested in certain areas where safety is a concern. (There is a procedure and study for official signs).

Temporary signs will be used. A designated area for parking for emergency vehicles only is needed. Signs are only as good as they are enforced.

- **Extra patrol and enforcement**

CHP, despite budget constraints, said they will enforce traffic safety and contact the Sheriff Department as needed. Forest Service is already doing a great job helping with enforcement.

Volunteers from the CHP and Sheriff's Department have agreed to help on snow days.

- **Communications**

Inform visitors at the bottom of the mountain of conditions at the top of the mountain.

Media releases

Recorded messages on designated AM radio frequencies

- **Towing**

Citations will be issued for parking violations. Towing will happen only as needed for safety and blocked roads.



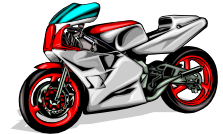
Traffic Safety Update... Motorcycle and Vehicle Safety

Motorcycle and vehicle safety issues related to crossing the center line on the South and East Grade Roads continue to be a major concern to residents. PMVFD spends countless hours attending to avoidable accidents on the South and East Grade Roads. The new CHP Captain, Deb Schoroder has informed me that even though there is a shortage of funds, she will be able to accommodate effective patrols.

CENTER LINE RUMBLE STRIPS (CLRS): A series of rumble strips have been installed on South Grade Road. CLRS, are a series of rumble strips applied along the center line to alert drivers when they drift from their lane. Time will tell statistically how effective these new rumble strips will be in preventing accidents.



Please report any traffic violations to the Oceanside CHP office 760-757-1675
When an immediate response is needed; call CHP Dispatch 858-637-3800
In the event of an EMERGENCY call 911



Residents are reminded to remain in their respective lanes. Too many times we experience drivers drifting over the line.
Traffic safety is everyone's responsibility.

Thanks To Our Advertisers

UPPER MEADOW LODGE Elegant Mountaintop Retreat Palomar Mountain CA



Welcome to Upper Meadow Lodge

Settled among the ancient cedar grove,
The Upper Meadow Lodge is a breathtaking
4300 square foot lodge style mountain home.
There are five luxurious suites each with separate
seating areas to enjoy relaxing with your favorite book.
In addition, just steps away from the main house,
is the romantic 'Fern Cottage' with its own private bath.
Every room in Upper Meadow Lodge has magnificent views!
Upper Meadow Lodge is the perfect location for your next
family reunion, wedding, corporate retreat, club, or special event!

Contact Alan and Diana Serry
760-742-2221
info@uppermeadowlodge.com
www.uppermeadowlodge.com
www.vrbo.com/225597

Palomar Views Vacation Cabin



Palomar Views is a charming, very comfortable 2 bedroom ocean view cabin

Palomar Views warm interior and furnishings
create an inviting relaxing atmosphere...
Exactly what you escape to the mountains for!
Enjoy stargazing from the private hot tub.
Sit back and enjoy the spectacular
off mountain views from the expansive deck,
complete with gas BBQ grill.

Contact Alan and Diana Serry
760-742-2333
dianaserry@msn.com
www.palomarviews.com

Bonnie Phelps, Realtor In the Cities and Above the Clouds

Search the MLS www.palomarproperties.com/mls
Staging Tips www.palomarproperties.com/staged
Mortgage Troubles? I can help. Call or visit www.palomarproperties.com/help
Call Bonnie Toll Free 888-718-5358 DRE #01293655



Palomar Mountain Planning Organization
P.O. Box 145
Palomar Mountain, CA 92060-0145

RETURN SERVICE REQUESTED
ADDRESS CORRECTION REQUESTED

Annual Pancake Breakfast & PMPO Annual Meeting

Breakfast 8am-11am • Annual Meeting immediately follows Breakfast

Saturday, May 29th, 2010
at the Palomar Mountain Volunteer Fire Station

Breakfast Menu:

Fresh orange juice, strawberries,
hot mountain pancakes,
bacon & sausage and steaming coffee

\$3.00 - Adults
\$1.00 - Children



Come on out, meet your
neighbors, enjoy a delicious
breakfast and hear about
what's happening
on Palomar!