



# PMPO

www.PMPOinfo.com

**Spring 2016 - Volume 27**

**The Palomar Mountain Planning Organization**

**Board Members:** Terri Bailey, Heather Beer, Glenn Borland (Chair), Robert Carlyle, Steve Clark, Donna Dose, George Evangelou (Treasurer), Brenda Fromlath, Libby Getzoff, Bruce Graves, Sue Hanson, Rosemary Johnston, Mike Pique (Secretary), Yvonne Vaucher, Michael Walsh (Vice Chair)

## A MESSAGE FROM THE CHAIR

*By Glenn Borland*

Welcome to the 2016 edition of the PMPO newsletter. The Palomar Mountain Planning Organization is a nonprofit public benefit organization whose purpose is not only to provide planning oversight for the Palomar community but also organize responses to particular Mountain needs. These needs range from road traffic and safety to representing the Palomar Mountain community in county planning issues. The board consists of fifteen members that are elected to three-year terms. Five member positions come up for election every year and candidates are drawn from Palomar Mountain property owners and business persons. If you would like to participate in board activities please do not hesitate to contact any of the board members, or email [secretary@pmpo-info.com](mailto:secretary@pmpo-info.com)

This last year has seen many changes in the groups on the mountain.

The reins of Palomar CERT have been turned over to James Ewen and we look forward to his leadership in the years to come.

Alan Serry continues to be our liaison with the CHP and county entities to "tame" our winter snow bird traffic snarls. Getting around on the mountain with so many additional folks after a snow is nigh on impossible and dangerous as emergency vehicles are unable to move at all. Again, many thanks for Alan's continued hard work.

The fire department transition to San Diego County Fire Authority responsibility has gone smoothly and the station staffing up here on Palomar Mountain has been exceptional. Many thanks to Battalion Chief Christina Williamson and all of the fire fighters who staff the station. Also, a round of applause for the Fire Board and their efforts in facilitating this transition. The PMPO also wishes to thank the Palomar

Mountain Fire Department for the use of their facilities as a venue for our various board activities as well as other community events.

The Fire Safe Council is up and running again thanks to the work of chair Yvonne Vaucher and her board. This will make grant money available for various fire prevention projects on the mountain. As we enter our fourth drought year, serious commitments to fire prevention and brush clearing on our properties should be a high priority. The question is not whether we will have another fire, it's simply when, and how prepared will we be? On this note, the PMPO gives thanks to the PMFD for their ever-present vigilance, Cal Fire with their wider venue of the forest and surrounding areas and the Forest Fire Lookout Association with their group of volunteers who keep an eye on all of us.

Bruce Graves has moved off of the Mountain to be closer to his family. He and his wife Lola have served the mountain in many capacities for well over 30 years; the mountain community is sad to lose them. Thanks for a job well done, you will be missed.

It is my hope that the various articles in this newsletter will give you a feel for the activities of the board and the community it serves.

As you read this newsletter, you are looking at the work of not only the contributors who wrote the articles, but also the work of the publisher Susan Humason and Brenda Fromlath who wrangled all of the contributors and advertisers to put together a coherent package. Many thanks for their hard work.

Also thanks to all of the other people that have contributed to the activities of the PMPO, a hearty thanks to all.

**Glenn Borland - PMPO Chairman**  
[chair@pmpoinfo.com](mailto:chair@pmpoinfo.com)



## Annual Pancake Breakfast & PMPO Annual Meeting

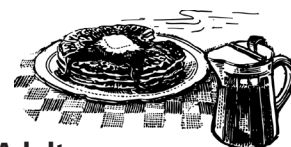
**Breakfast 8am-10am • Annual Meeting immediately follows Breakfast @ 10am**

**COME JOIN US!**

**Saturday, May 28th, 2016**  
**at the Palomar Mountain Volunteer Fire Station**

21610 Crestline Road • Palomar Mountain, CA 92060

*\* Intersection of East Grade Road (S-7) and South Grade Road (S-6)\**



**\$3.00 - Adults**  
**\$1.00 - Children**

## TABLE OF CONTENTS

Article	Page
Message From the Chair	1
Pancake Breakfast Info	1
Treasurer's Report	2
Friends of Palomar Mountain State Park	3
Palomar Mountain Fire Safe Council	4
PMPO Board Elections	4
Community Tidbits	5
Community Center Of Palomar Mountain	7
Address Numbers!	7
Palomar Observatory	8
Elsie's Mountain...New Book Release	9
Neighborhood Watch	9
Comm. Advisory Group - Sheriff's Dept.	10
Community Emergency Response Team	11
Forest Fire Lookout Assoc Volunteers	11
Palomar Mtn Community Church	12
Palomar Amateur Radio Club	12
Gold Spotted Oak Borer...It's Here	13
Palomar Mtn Vol Fire Dept	14
Nextdoor Palomar Mountain	14

**Palomar Mountain**  
**Planning Organization (PMPO)**  
**Box 145**  
**PALOMAR MOUNTAIN, CA 92060-0145**

This newsletter is produced annually and distributed in May of each year. Without the help of many volunteers, this newsletter would not be possible.

Coordinator: Brenda Fromlath  
 Layout & Design: Susan Humason  
 Proof Readers: Michael Pique, Libby Getzoff,  
 Michael Walsh & Glenn Borland

Article Contributors:  
 Thank you to all contributors who make  
 this newsletter possible.

Assemblers:  
 Thanks go out to the many individuals that help each  
 year with the assembly and mailing of the newsletter.

If you have any information that you would like to  
 contribute to future newsletters,  
 please email the information to  
 Brenda Fromlath at:  
 beppebrenda@gmail.com  
 attn: PMPO Newsletter

Thank You to Our Paid Advertisers who help offset the  
 production and mailing costs.

## Palomar Mountain Planning Organization

### TREASURER'S REPORT

**2015 - 2016**

*By George Evangelou, Treasurer*



I am happy to report that (once again) there is nothing exciting to report!

Our year-end balance showed us in slightly better fiscal condition, with the generous assistance from 15 donors (35% fewer than last year), contributing \$1,565.00, (47% less than last year).

We realized a net gain of \$256.92 from the Palomar Mountain Planning Organization's Annual Pancake Breakfast, and finished the year with \$773.80 more than we started it with.

	Jan 1, 2015	Jan 1, 2016	Difference
Checking	\$ 8,752.28	\$9,503.91	\$751.63
Savings	\$33,338.67	\$33,360.84	\$22.17
Totals	\$42,090.95	\$42,864.75	+\$773.80

The annual filing with the Attorney General's Office Registry of Charitable Trusts has been completed for 2015.

## Bailey's Palomar Resort

Since 1888  
Camping • Lodging • Events



For over a century now, folks have been coming up to Bailey's for a special slice of San Diego's back country.

Bailey's sixty-acre mountaintop environment is a unique blend of cool forest and rich meadow.

The historic General Store, Dance Hall, and the newly restored Hotel provide an authentic look and feel to a valley that has changed little over the last 100 years.

Lodging at the Bailey House, camping, and cabin rentals are available.

**Let Us Help You Plan Your Next Event**  
**760-742-1859**  
**www.BaileysPalomarResort.com**

*This is a Paid Advertisement.*

# PMPO Needs Your Financial Support...

All property owners, residents, and any parties interested in the Palomar community are members of the Palomar Mountain Planning Organization. PMPO is recognized by both Federal and State Taxing Authorities as a tax-exempt organization. This means that your gifts are income tax deductible.

The Palomar Mountain Planning Organization (PMPO) studies and tackles issues of importance to Palomar Mountain, its residents, and visitors. Your financial support represents the Mountains' ability to make its voice heard and have its concerns expressed to the applicable local government agencies.

**We depend on  
Your Support.  
Please,  
Give Generously.**

## **Palomar Mountain Planning Organization -- 2016 Contribution --**

RETURN TO:

PMPO, Box 145

PALOMAR MOUNTAIN, CA 92060-0145

PMPO IS RECOGNIZED BY FEDERAL

AND STATE AUTHORITIES

AS A TAX EXEMPT 501 (C)(3) ORGANIZATION.

YOUR CONTRIBUTIONS ARE 100% TAX DEDUCTIBLE.

OR DONATE ONLINE AT [WWW.PMPOINFO.COM](http://WWW.PMPOINFO.COM)

NAME: \_\_\_\_\_

ADDRESS: \_\_\_\_\_

PHONE: \_\_\_\_\_

EMAIL: \_\_\_\_\_

I AM CONTRIBUTING: \$ \_\_\_\_\_



Friends of  
PALOMAR MOUNTAIN STATE PARK

## FRIENDS OF PALOMAR MOUNTAIN STATE PARK ANNUAL REPORT



*By Rosemary Johnston, FPMSP secretary*

Palomar Mountain State Park had more than 100,000 visitors in 2015, less than three years after the park was threatened with closure together with 69 other California state parks. Friends of Palomar Mountain State Park (FPMSP) organized to keep the park open and provide critical financial and programmatic support to the 1,800 acre park founded more than 80 years ago. During the past year, park staff was able to complete needed repairs to bathroom roofs, construct a new bridge across Doane Pond, and begin work on creating internet access at the Boucher Outlook and at the front entrance. In addition, Friends of Palomar funded a part-time seasonal park aide to increase educational and outreach programs.

Together with park management, we are evaluating the possibility of creating a visitor center at one of the vacant park ranger residences where visitors could learn about the natural history, geology, Native American history, and other aspects associated with the park's development. We continue to supplement the park budget with funding for

deferred maintenance projects to ensure that visitors will have a positive experience and return again and again. The Parks Forward Report, an extensive report with numerous recommendations for state parks to expand their outreach to attract more urban, more diverse, and younger visitors, continues to be our template as we work closely with park management, volunteers, and donors to FPMSP to create the best possible visitor experience.

FPMSP funded the successful Apple Festival at the park, which drew almost 900 people in October 2015. We were also represented at the annual CALPA/ cooperating association conference in Borrego Springs and the annual Park Advocacy Day in Sacramento, sponsored by the California State Parks Foundation. We are expanding our social media presence and looking forward to another successful year.

If you'd like to be a part of Palomar Mountain State Park's success, please visit [www.friendsofpalomarsp.org](http://www.friendsofpalomarsp.org).

To learn more about the park and what it offers, visit [www.palomarsp.org](http://www.palomarsp.org).



## PALOMAR MOUNTAIN FIRE SAFE COUNCIL... MOVING AHEAD

*By Yvonne Vaucher*

**T**he Palomar Mountain Fire Safe Council (PMFSC) serves our Palomar Mountain community by promoting wildfire protection and fire safety through fuel reduction programs and community education. We identify areas of the mountain where lives, structures, and/or resources are at significant risk due to high fuel loads, write grants for funding to accomplish the work necessary to reduce the fuel load in those areas, prioritize, manage and oversee fuel reduction/fire safety projects, and educate the mountain community about fire safe practices and opportunities. The Council works closely with fire agencies, Resource Conservation District, BLM, Federal Forestry, California State Parks, and other Fire Safe Councils in the county.

Thanks to Palomar Mountain community leadership, initially by Shana Ackerman and then by Robert Carlyle, the PMFSC has done a tremendous amount of work to make our mountain more fire-safe for all since 2002 by writing grants, working with government agencies to get funding, coordinate the work to be done with property owners and provide "boots on the ground" to oversee projects.

This year we have a lot of work ahead of us writing grants and working together for a safer mountain. Our current top priorities are fuel reduction along the eastern and northern slopes of Palomar Mountain adjacent to Birch Hill, Observation Point/Conifer Road and Crestline.

We welcome your interest and participation in PMFSC activities. Notices of all meetings and other info are posted at the Palomar Post Office on the bulletin board.

Visit our website for the latest PMFSC updates:  
[www.mypalomarmountain.com/firesafecouncil](http://www.mypalomarmountain.com/firesafecouncil).

Contact us at: PMFSC, PO Box 247, Palomar Mountain, CA 92060.

Look for us at the annual PMPO meeting on Memorial Day weekend, Saturday May 28.

Current PMFSC Board members include:

Yvonne Vaucher (President)  
Mike Wilson (Vice President)  
Cecelia Borland (Secretary)  
Gina Aven (Treasurer)  
Terri/Brad Bailey  
Bonnie Phelps  
Nicholas Spear  
Terri Sproul  
Mike Pique

The Palomar Mountain Fire Safe Council is a fully volunteer, 501c 3 non-profit corporation. Your tax-deductible donation is very much appreciated. Help us help you!



## PMPO BOARD ELECTIONS

*By Glenn Borland  
PMPO Chairman  
[chair@pmpoinfo.com](mailto:chair@pmpoinfo.com)*

The PMPO Board consists of 15 volunteers, five of which are up for election every year. These elections occur during the Annual General Meeting following the Pancake Breakfast. The next Annual meeting will be held at 10:00 AM, Saturday May 28th 2016.

Membership on the PMPO Board is open to any individual resident, property owner, or business person in the Palomar Mountain area of San Diego who wishes to contribute time and effort to achieve the purposes of this Organization. Members may be elected for consecutive terms. Board members serve without compensation. Board members must meet the attendance requirements as stated in the PMPO By-laws article 7.6. The Board meets a minimum of four times a year. A description of the PMPO and its various Committee activities, Articles of Incorporation, and By-laws can be viewed on the PMPO web site, [PMPOInfo.com](http://PMPOInfo.com).

This year, five Board seats are due to expire. The newly elected board members terms will expire in May 2019.

The following seats are up:

- 1) Donna Dose
- 2) George Evangelou  
(acting treasurer)
- 3) Rosemary Johnston
- 4) Bruce Graves
- 5) Steve Clark





# COMMUNITY TIDBITS... By Bonnie Phelps



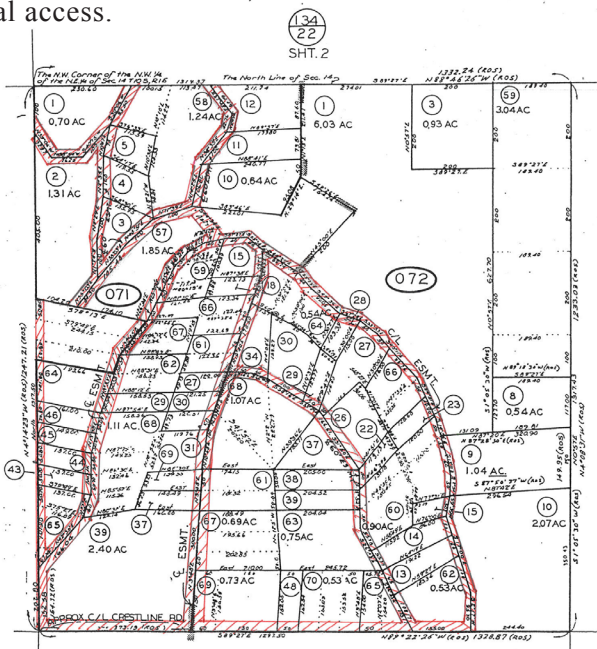
## PALOMAR EASEMENT PROJECT

Over the past year there has been tremendous progress on the Palomar Easement Project! Through some wonderful connections and work at the San Diego County offices, letters have been provided that recognize most of the little dirt roads across Crestline and some in Birch Hill as 'public roads, privately maintained'. We can now say ALL of the properties along the roads from the Fire Department, up through the end of Crestline are no longer 'landlocked'.

The left turn North on Birch Hill from Crestline has the County letter and is the map shown below. Beginning with the right turn South on Birch Hill we have part of that westerly area, 'cured'. However, as we get to the 4-way intersection (Palomar style), some work is needed involving a gap of about ten properties or so. Curing that area will open up the last 80 acres of Birch Hill.

One solution would involve a surveyor and cooperation with those property owners. The surveyor would provide the legal description for the existing road. The access would be granted to themselves (whose properties are all landlocked on paper, too) and others in that area. There may be a couple other options.

Other parts of Palomar have needs that could be addressed at some point to remove clouds on title. Time will tell. Meanwhile, for more detailed history, visit [www.palomarmountainnews.com](http://www.palomarmountainnews.com) and search 'easement project' or call Bonnie Phelps 760 742-1742 for more information about continuing work on this project. A very sincere thanks to so many people for the support and work done to come this far in securing this deeded, legal access.



Plotted Easement Map (1 of 8) in Crestline area  
(Hatching indicates deeded easements to local property owners)

## ROAD MAINTENANCE AGREEMENTS

In the lending world there are ever-changing requirements nation-wide. Over the past year there was a window of time when Road Maintenance Agreements (RMA) were required for a loan (new purchase loan or even a re-finance) if the property was not on a public maintained road. We had just resolved the easement issues for an area on Crestline and then the news came that an RMA was required since the road was a 'public road, privately maintained.' The lenders wanted to know that a privately maintained agreement existed between property owners. That was to be the case for ALL properties that did not front on a public maintained road. We sourced out a pretty simple Road Maintenance Agreement, got it signed and recorded for that first road in escrow. History in the making!

Then the lending rules softened up, again NOT requiring RMAs. It is my belief that they will swing back again. If you would like to be a 'block captain' for your neighborhood to work together to establish an RMA, simply let me know. I am glad to provide you with the paperwork and direction to achieve that goal, get it recorded and have a very clean title report for all. Bonnie Phelps (760) 742-1742 [bonnie@bonniephelps.com](mailto:bonnie@bonniephelps.com)

## BURN PERMITS



Folks with mountain property always seem to have downed branches especially after storms. Wondering what to do with all the trimmings after 'parking up' your property? Would you like to have a campfire or burn your cut brush? A permit is required. Permits are available only when the U. S. Forest Service deems it is safe. After a rain or snow is often a good option. **Call Tim Gray with the US Forest Service 619-209-1414 and he'll send someone right out to help keep our forest green and fire safe.**

## EXPLORE THE STARS

The Explore the Stars Program takes place one weekend a month, from April through October, at the Observatory Campground on Canfield Road, about half way down on the right. Amateur astronomers from San Diego, Riverside and Orange Counties bring out their own telescopes, sharing spectacular views of the night sky with all comers. Saturday nights feature a talk at the campground amphitheater at dusk. Click on [www.fs.usda.gov/cleveland/](http://www.fs.usda.gov/cleveland/) and search "Explore the Stars".



## LIKE TO VOLUNTEER IN THE STATE PARK?

There are many different opportunities waiting for you in our 2000-acre treasure on Palomar. Ranger Jessica Murany is glad to get your questions answered anytime (760) 742-3830.

# MORE MOUNTAIN TIDBITS... *By Bonnie Phelps*

## TRASH REMOVAL

As most of you know, we no longer have a dump transfer station up here. There are several neighbors who have a dumpster on their property and offer to share the dumpster. Depending on how many people go in on it, the monthly fee is very reasonable. Alternatively, the Pala Transfer Station, just this side of the Pala Casino, is the closest dump and absolutely the best price. They take anything and everything and are a pleasure to deal with.

## INTERNET



New Internet options! You have several internet choices on Palomar. The service with the fastest internet that I have found is through Western Broadband. Fred and Wally have worked real hard to set up repeaters in different areas to be able to provide service where it wasn't available in the past. Thanks for all their hard work. If you are still without internet, and would like it, you might give them a call at 760-505-7226.



## PROPANE or WATER TANK?

Do you have a metal propane or water tank? Maybe it is due for some Spring cleanup. When a tank doesn't have any leaves or dirt touching it, it will last much longer. When erosion has caused dirt to build up around the tank, it will rust and can rust right through, draining all that propane right into the soil. Most tanks in need that I see 'round the mountain are only a few minute fix with a shovel or rake and they'll be all set.



## HISTORICAL GEMS



Have you read Brad Bailey's book, Palomar Mountain? Brad is a 4th generation Palomar Mountain resident. He wrote an exciting addition to the 'Images of America' series of back-country towns across America. Brad tells of our beginnings with the Kumeyaay peoples, through the early settlers, and on to the "Big Eye and Little Green Men." He captured our mountain history in text and pictures. Thanks also to contributions from Peter Brueggeman, the Beishline / Waite families and original settler families. The book also includes previously unpublished glass plate images, personal remembrances, maps, fliers and postcards that follow the fabric of this vibrant community's past up to the present day. "Palomar Mountain" is available at the Palomar Mountain General Store, the Observatory gift shop, and online through Amazon.com.

There is quite a collection of historical books at the General Store. Be sure to check it out when you are up next! Pasqual called recently to say that our Palomar Mountain Holiday Cookbooks were reprinted! Those were the good old days when we always made something from 'scratch' for the potlucks! Let's do it again!!!

## THREE REASONS FOR TREE THINNING



Palomar is sure losing a lot of trees again with the drought. When you see the very top of some of these firs die, sometimes it can take years to claim the rest of the tree. But here, of late, I noticed a couple of huge firs totally turn brown, all the way down, and in a couple weeks, turn into lightning magnets. Personally, we are thinning out trees, especially ones that are closest to our well. Hopefully by thinning some trees, the ones that remain will survive the drought, and be kinder to our water table. Need another reason for thinning out your trees? Insurance. One of the most recent closings had their insurance company call after an inspector had been there. They were required to remove trees so that no tree branches hung over the roof. This is a new requirement for some insurance companies.

## MOUNTAIN NEWS

For all things Palomar, simply self-subscribe at [www.palomarmountainnews.com](http://www.palomarmountainnews.com). Since 1998, this free service has well over 2000 subscribers of locals, weekenders, and those who wish they were. Opportunities abound for you to keep up on the latest or get involved. We have ever-growing New Neighbors postings, in addition to weather updates, health and safety posts, road closures, fun historical info and lots, lots more. Have you already subscribed and you're not getting the News? Have you changed your email address lately? Simply re-subscribe. Also put 'Palomar Mountain News' on your White List to assure receiving the News. You can scroll through the archives or type in key words to locate information. I'll keep all the news of your favorite mountain coming your way and that's a promise!



## MOUNTAIN YELLOW PAGES

When you need products or services on Palomar Mountain, visit the **Mountain Yellow Pages**. Don't see what you're looking for? Or, would you like to be added? Do you have a company that you were very pleased with? Just let me know. Additions and corrections always welcomed. Stay tuned, as it will be available as to download and print for easy reference real soon.

## MY PALOMAR MOUNTAIN.com COMMUNITY WEBSITE

Do you have something to add to our community website? **MyPalomarMountain.com** has been available as our community site for the past decade. Click on 'Community Links' and you'll find the connections to what makes Palomar so special - our wonderful little community and lifestyle on this absolutely beautiful mountain. We're celebrating 18 years back at our 'Square House', glad to be a part of this community and to help in anyway.  
**Bonnie Phelps, and Don, too! 760 742-1742 - bonniephelps.com**

*This is a Paid Advertisement.*

---

# COMMUNITY CENTER OF PALOMAR MOUNTAIN

*By John Lesac*

The Community Center has been ramping up the number of activities on the mountain. We hope to continue this trend. The following article describes what your community center has provided in the past year.

A Tamale cooking class was sponsored by the Community Center and was held at the Upper Meadow Lodge. The class was taught by professional chef Rei and was well attended.

The Baileys (Terri and Brad) donated the use of their barn to the Community Center one evening for showing a movie, followed by a barn dance and a dessert potluck. The silent movie "The Virginian" directed by Cecil B. DeMille was shown. This was of special interest, as a large part of the footage had been taken on Palomar Mountain. Brad Bailey provided country music on old vinyl records which were played on an up-to-date sound system. Everyone danced and enjoyed the experience. Barn dancing had been a long-time tradition at the Baileys. Let's hope we can revive this activity.

A photography class was given at the Fire Station in the double-wide trailer. The technical aspects of camera use were explained using a projector connected to a digital camera. The effects of shutter speed, aperture, film speed

and focal length were demonstrated. The use of automatic exposure was explained: how this feature, present in most modern cameras, does not always produce optimum results.

The Crestline Group Campground was rented by the Community Center for a yard sale event. Residents were invited to set up a table and bring items to sell. A potluck lunch followed the yard sale.

The Community Center participated in the annual Apple Festival held at the State Park. Bird house kits were made available for the kids and their parents to assemble during the event. Thirty kits at \$5 each were sold out by 2:00pm.

A dance and potluck was held on the Fire Station grounds in September. The "North County Lumber Truck" band played classic rock on the outdoor stage. The concrete slab in front of the stage served as the dance floor.

Finally, the CCPM hosted a festive Christmas party in the Fire Station garage. Dutch Bergman provided the music of carols. A potluck provided the food and games were played.

If you have any ideas for additional events or any suggestions, please contact John Lesac at:  
[john.lesac@juno.com](mailto:john.lesac@juno.com)



---

## ADDRESS NUMBERS!!! *By Alan Serry*

Help the Fire Department find your house. Make sure everyone in your household knows your address. Post your address on your house (3" numbers) and at your driveway to be easily located from the easement or street. High visibility reflective address signs are available and can be made for \$19. Green signs for addresses and blue signs if you have a water tank available to the Fire Dept. Contact Alan Serry at [alserry@msn.com](mailto:alserry@msn.com) or call 760-533-1268 to order a sign.



---

# PALOMAR OBSERVATORY

*By Andy Boden/ Deputy Director,  
Caltech Optical Observatories*

I'm happy to report that Palomar Observatory (<http://www.astro.caltech.edu/palomar/homepage.html>) had an excellent year in 2015/16, and next year looks to be even more exciting!

In 2015/16 we made major investments in the Observatory, deployed new capabilities for research and public engagement, saw long-time staff members retire and added new members to the Observatory team. Topping this list is the successful repainting of the Hale/200" Telescope (<http://www.astro.caltech.edu/palomar/about/telescopes/hale.html>) dome for the first time in several years. To paint the Hale dome, the Observatory partnered with South Coast Painting of San Diego. Over two weeks in August 2015, South Coast personnel deployed specialized equipment and rigging, prepared the dome surface, and applied several coats of new "Titanium White" paint to the venerable dome. The Hale Telescope returned to service in early September with its dome better protected from the Palomar elements.



Even more recently, we made first commissioning observations with a new visible-band camera for the Hale called WaSP (Wafer-Scale



imager for Palomar) in early February 2016. WaSP is being developed jointly by Caltech (<http://www.caltech.edu/>) and the Jet Propulsion Laboratory (<http://www.jpl.nasa.gov/>; both in Pasadena), and represents a significant investment in new capabilities for the Hale telescope and the research communities it supports. When fully deployed later in 2016, WaSP will allow faster and better imaging of the night sky on the Hale. Lastly I will mention updates underway at our Greenway Visitor's Center (<http://www.astro.caltech.edu/palomar/visitor/visitorcenter.html>). We are in the process of updating all the display materials at the Greenway Center, and a notable new addition (November 2015) is the Luskin Virtual Presence Kiosk (<http://www.astro.caltech.edu/palomar/visitor/visitorcenter/luskin/>), supported by a generous gift by Meyer and Renee Luskin of Los Angeles. The kiosk and the gift supporting it allows mobility-impaired visitors to experience the Hale dome by rendering real-time video from dome interior into the Greenway Center space. Additionally, pre-recorded media (topical videos and slideshows) are available to visitors through the kiosk monitor. Palomar Observatory and Caltech are deeply grateful for the Luskins gift, and for their abiding friendship with the Observatory and support for its research, education, and

public outreach missions.

It is always bittersweet when Observatory staff reaches the happy milestone of retirement: exciting to see colleagues move into the next phase of their lives, but also sad to know you will miss their many contributions to the Observatory community. 2015/16 has seen several staff retire from regular employment with the Observatory, and we wish them every happiness in what lies ahead. Of course these departures create exciting new opportunities for advancement among remaining staff, and opportunities for new personnel to join the Observatory. In this process I am reminded what a blessing it is to be a member of the dedicated Observatory team.

Looking forward, 2017 promises to be a banner year in the Observatory's history. As I wrote in these pages two years ago, Caltech has partnered with the National Science Foundation (<http://www.nsf.gov/>) and other universities around the country and world to develop and deploy the Zwicky Transient Facility (ZTF; <http://www.ptf.caltech.edu/ztf>) at Palomar in 2017. Named for Caltech Astrophysicist Fritz Zwicky ([https://en.wikipedia.org/wiki/Fritz\\_Zwicky](https://en.wikipedia.org/wiki/Fritz_Zwicky)), ZTF will bring a new wide-field camera to the 48-inch Samuel Oschin Telescope, creating unprecedented new discovery opportunities for the US national and international astronomy communities. This new camera is under construction in Pasadena, and is expected to arrive at Palomar around this time next year. I look forward to reporting on the camera's Palomar arrival in our next contribution to this newsletter.



## New Book Release...



# ELSIE'S MOUNTAIN - Memories of Palomar & Southern California 1897-1987 By Barbara Waite

*Across the peaks of Palomar a winter wind is blowing;  
The mountain air is crisp and keen: tonight it may be snowing.  
Against the slopes of mauve and bronze the evergreens are looming,  
Where only flowers of memory still linger in their blooming.*

- Elsie Hayes Roberts

Last week I walked among the apple trees along State Park Road, and marveled at the beauty of the blossoms on these gnarled trees, planted over 100 years ago, many of them by my grandfather and great-grandfather. I have been privileged to read the diaries, letters and journals of my grandmother's from this period in mountain history. It was fascinating to experience through them the mountain culture and the day-to-day life of ranchers of the time; a wilder Palomar, a more primitive Palomar, but a still beautiful Palomar. I have tried to preserve these times, along with many historical photographs, in my grandmother's memoir of this period in Palomar history, "Elsie's Mountain," so that we in this day can experience the Palomar of the last century.

One newspaper writer described my grandmother, Elsie Hayes Roberts (at age 97), as having, "...a mind as sharp as an Ansel Adams photograph." Elsie viewed life as a glorious adventure, recording a rich diary account of the serenity and beauty of her beloved Palomar mountain.

Elsie first traveled to Palomar in 1904 by horse and wagon, a three-day excursion from Long Beach. In the summer of 1918 Elsie, her husband Jack Roberts and their baby Catherine moved to Palomar to work on the apple ranch purchased by her parents in 1904. They eventually operated a small resort. Here are some gleanings from Elsie's records.

In 1919, from March 14-21, twenty-three inches of snow fell. In April, Elsie recorded walking to Chimney Flats for snow to make ice cream. Hail struck just before May, but the apple crop survived. Elsie recorded picking a regular crop of Jonathan apples starting September 11, 1919. They later picked Ben Davis and Smith cider apples. That year Elsie recorded 560 boxes of apples sold. They were Jonathans, Golden, Spitz, Newton, and Arkansas Beauties. They also grew a variety called Palomar Giants (one apple could weigh more than 1 pound). In 1920, the rainfall exceeded 50 inches for the year.

During the apple-season, they hired pickers with diverse backgrounds and Elsie's husband often employed British cooks. The combination of personalities proved to be humorous. The sheriff showed up one afternoon to explain that the man hired to chop wood was a convicted ax murderer that had escaped. Elsie served dinner for the sheriff and his prisoner.

"Elsie's Mountain- Memories of Palomar & Southern California 1897- 1987" is now available at Mother's Kitchen, The Christian Conference Center and on Amazon. I hope you will pick up a copy and enjoy reading about Palomar history as much as I enjoyed writing about it.

# NEIGHBORHOOD WATCH PALOMAR MOUNTAIN

By Alan Serry

Prevention is the most effective way to fight crime, and one of the best prevention methods is Neighborhood Watch. In addition, Neighborhood Watch is a way to meet your neighbors and to stay abreast of activities in your area. Its tremendous success is the result of neighbors working together with the Sheriff's Department in a program of mutual assistance.

There are two very useful San Diego Sheriff's Department forms for Palomar Mountain residents:

Trespass Arrest Authorization & Vacation Check Request. Both forms are available as a PDF; Contact Alan Serry for the form(s).

Two local Neighborhood Watch groups have been established for Palomar Mountain:

Bailey Meadow Neighborhood  
- Terri Bailey 760-742-1859

Crestline-Birch Hill Neighborhood  
- Alan and Diana Serry 760-533-1268

Brandy Contreras, Crime Prevention Specialist from the San Diego County Sheriff's Department is our local advisor. Brandy can be reached at 760-751-4408 or [Brandy.contreras@sdsheriff.org](mailto:Brandy.contreras@sdsheriff.org)





# COMMUNITY ADVISORY GROUP FOR THE SHERIFF'S DEPARTMENT

*by Alan Serry*

The first meeting of the Community Advisory Group was held March 16th. This is a group of agencies and area representatives under the Valley Center Substation's Jurisdiction of the San Diego County Sheriff's Office (SDSO). The new leader of this area, Lt. Jason Vickery, was introduced, and then he proceeded to explain some new ideas and address some old concerns.

**Repopulation after evacuations:** Evacuations are always difficult in a disaster because of multi-agencies and time pressures, but procedures are in place. Repopulation is being discussed: When? – residents want back in as soon as possible, Who? – how do you verify residents only, Which agency has the control and whom do the residents contact, How do those who are authorized by a local agency get through a roadblock manned by another agency? How do you keep out looters? Should you issue cards to individuals who need to get through but are not first responders, like water system operators or ranchers with livestock? Incident Command is exploring colored arm bands that change daily accompanied by a word of the day. If you have suggestions, let me know for the next meeting.

**Un-manned Aerial Vehicles (UAVs, drones):** SDSO would like to incorporate the use of Phantom brand drones for SWAT. Drones can fly under power lines and trees, unlike a helicopter, drones can fly right up to a window and look in, drones fly at night, and in some situations, drones can fly inside structures. For Search and Rescue, drones would be very helpful. Incident command post and crime scenes could benefit from drones. Drone reconnaissance could make Bomb squads and Hazard Materials squads safer. SDSO is aware of the public's concern about privacy, and claim drones would only be used to help. Drone side notes: Government and Cities are busy trying to regulate drones, currently they can fly anywhere they want on the mountain. The unofficial rule is they should not be flown below the top of the tree line on other people's property. If you knock one down, you could be charged with vandalism. Any concerns, let me know for the next meeting.

Valley Center Substation covers 330 square miles and 25,000 residents. This number could grow on any given day to 60,000 with the Casinos and events. Lt. Vickery is trying to get 2 additional Deputies assigned to this area. He believes Deputies assigned to the back country need to be seasoned/experienced and not right out of the academy. He says so much of their job is reactive to crime and he wants to be more proactive to prevent crime (and specifically mentioned drugs).

I brought up the reluctance of some deputies to come to the mountain when requested for non-911 calls, even on our Snow Emergency Plan Days. Lt. Vickery said that will not happen again and he will support our efforts to prevent "gridlock" on Snow days. A good number to carry with you or program into your phone is the Non-Emergency Sheriff's Dispatch number 760-749-1303. The Sheriffs know that Snow Events are more than traffic problems and extend into private property violations.

Note: There is a license plate reader at the bottom of the Valley Center Grade where it meets Escondido. EVERY car license plate is read that leaves Escondido for Valley Center and Palomar Mountain. Many stolen cars are caught in Valley Center on their way to a casino.

Remember the SDSO Crime Prevention Specialist, Brandy Contreras, is an advocate for Palomar Mountain. Her number is 760-751-4408 and [brandy.contreras@sdsheriff.org](mailto:brandy.contreras@sdsheriff.org). This is YOUR Advisory Group. Contact Alan Serry at 760-533-1268 or [alserry@msn.com](mailto:alserry@msn.com) for any comments to share at the next meeting.



**Save The Date:**  
**PMPO**  
**Pancake Breakfast**  
**Saturday**  
**May 28, 2016**

**8am-10am**  
**PMVFD Station**  
**Annual Meeting**  
**to follow Breakfast**  
**\$3.00 - Adults**  
**\$1.00 - Children**

---

# CERT

## COMMUNITY EMERGENCY RESPONSE TEAM

*by James Ewen, Palomar Mountain CERT Program Manager*

The Community Emergency Response Team (CERT) is about readiness, both on a personal level and as a community. CERT is about people helping people. A CERT is a positive and realistic approach to emergency and disaster situations where citizens themselves can make the difference.

When a disaster happens that overwhelms local emergency response capabilities, CERT members can apply their training to give critical support to their family and neighbors. CERT educates individuals about disaster preparedness for hazards that may impact their area and trains them in basic disaster response skills, such as fire safety, light search and rescue, team organization, and disaster medical operations. Using training learned in

the classroom and during exercises, CERT volunteers can assist others in their community following a disaster when professional responders are not immediately available to help. CERT volunteers are also encouraged to support emergency response agencies by taking an active role in emergency preparedness projects. CERT training gives people the decision-making and practical skills to offer immediate assistance to their community.

The CERT course is taught by a trained team of first responders who have completed a CERT Train-the-Trainer course conducted by their state training office for emergency management, or FEMA's Emergency Management Institute (EMI). The CERT course will benefit any citizen

who takes it, and they will be better prepared to respond to the aftermath of any disaster.

A Basic Academy Training Course is available. This 9 unit (20 hour) course covers; Disaster Preparedness, Fire Safety, Disaster Medical/Psychology, and Light Search & Rescue.

The course final event is a realistic disaster simulation where you will have the opportunity to apply your training in a hands-on, scenario-based exercise.

***For more information about this opportunity or to enroll contact CERT Program Manager James Ewen at [palomar.mountian.cert@gmail.com](mailto:palomar.mountian.cert@gmail.com)***

---

Donations to CERT can be made to Palomar Mountain Fire Department. CERT is a part of the Palomar Mountain Fire Department, which is a 501c3, and all donations are tax deductible. Please make checks payable to Palomar Mountain Fire Department and specify CERT on the check. Mail your donation to Palomar Mountain Fire Department, PO Box 235, Palomar Mountain, CA 92060.

---

## FOREST FIRE LOOKOUT ASSOCIATION VOLUNTEERS

*By Curt Waite/Administrative Coordinator/Forest Fire Lookout Association, San Diego Chapter*

As we approach the beginning of a new fire season, the mountain fire lookout volunteers are gearing up for their days in the towers keeping watch over Palomar Mountain. Both High Point (Cleveland National Forest) and Boucher Hill (Palomar Mountain State Park) lookout towers will again be staffed on a daily basis beginning May 15 and running through mid-November.

Training of new volunteers (about a dozen this year) and a refresher course for veterans took place at the Christian Conference Center in April. During the first two weeks of May the towers were open for training purposes.

Watching for fires is not the only duty of our volunteers, though it is

their primary one. (Last fire season 108 smokes were reported by the two towers along with 70 lightning strikes.) The lookouts also serve as ambassadors for the mountain to tower visitors (737 at High Point, 7883 at Boucher) as well as monitors to report unlawful activities – illegal campfires, out-of-season hunting, trespassers, etc. Weather forecasters also rely on real-time reporting of conditions at the towers, passed on to them through fire dispatch.

Last year the largest wildfire in San Diego County was on Palomar Mountain. Almost 200 acres in the Cutca area just north of High Point. It was a lightning strike “sleeper” from a

storm the previous week, called in by our lookout.

We are always looking for volunteers, in particular those who are familiar with Palomar and its environs. You can learn more about the group and opportunities to serve on our Forest Fire Lookout Assn., San Diego Chapter. Website at [www.ffla-sandiego.org](http://www.ffla-sandiego.org).

We would encourage you to visit us at the towers, though High Point access is only from Highway 79.





*Thank You!*

A Special Thanks goes out to all of the current and past Board Members that keep the PMPO a viable organization looking out for the well-being of Palomar Mountain!

## PALOMAR MOUNTAIN COMMUNITY CHURCH



The congregation of Palomar Mountain Community Church holds its Sunday worship services in the trailer behind the Fire Station.

On behalf of the congregation, I would like to extend an invitation to any and all Palomar Mountain residents to join us on Sunday morning at 10:45am.

Our service follows a simple format: singing, prayer, the reading of Scripture, and a message based on a passage from the Bible. During the coming months, we will be studying the Old Testament Book of Ruth.

On the first Sunday of the month we celebrate the Lord's Supper, and have a delicious potluck meal following the service.

**Matthew Currie, Pastor**  
(760) 738 2638  
mpcurrie@sbcglobal.net



Palomar Mountain Community Church  
P.O. Box 25, Palomar Mountain, CA 92060

## PALOMAR AMATEUR RADIO CLUB



*By Charlie Ristorcelli*

Palomar Amateur Radio Club is pleased to be a land owner on the mountain. Having property allows us to serve public interests at a reduced cost since we avoid monthly rental fees for our infrastructure. As a property owner, the Club tries to maintain the beautiful mountain environment in as pristine a condition as we can. So over the next year, having already repainted some of our buildings, the Club will continue aesthetic improvements in keeping with the rural surroundings and our neighbors. If local residents have concerns, please contact the Club at the points of contact listed below.

Palomar Amateur Radio, a non-profit corporation, is dedicated to expanding the fraternal aspect of radio technology and emergency communications. The infrastructure the Club maintains at the Palomar Mountain site is a key element of public emergency preparedness. In the event of loss of the commercial communications infrastructure in San Diego County (telephones, internet, TV, etc.), the Club's communications systems remain operational for use by amateur radio operators locally as well as throughout the United States. Those capabilities then serve the dissemination of health, welfare, and emergency communications through the personal efforts of amateur radio volunteers in contact with the public. Members of the Club will be delighted to discuss these capabilities and other aspects of communication technology at public events. If anyone is interested in such a presentation, please contact the Club as shown below.

### **Palomar Amateur Radio Club**

meets in Carlsbad  
the first Wednesday of the month at 7:30 PM  
at the Carlsbad Safety Center  
2560 Orion, Carlsbad, CA

More information on the web at  
[www.palomararc.org](http://www.palomararc.org),  
email [board@palomararc.org](mailto:board@palomararc.org)

**Palomar Amateur Radio Club - 619-368-7617**

**Palomar  
Properties.com**

**CalBRE #01293655**

**Thank you for entrusting me with your Real Estate  
Business since the beginning of the Century!**

**Bonnie Phelps [bonnie@palomarproperties.com](mailto:bonnie@palomarproperties.com) 760.742.1742**

*This is a Paid Advertisement.*



# GOLD SPOTTED OAK BORER... IT'S HERE

By Yvonne Vaucher

**H**aving already destroyed thousands of mature oak trees in eastern San Diego County, the gold spotted oak borer (GSOB) beetle is now established on Palomar Mountain. This pest was imported into California from Arizona where natural predators keep the beetle in check and oak mortality is very low. The GSOB first appeared in Southern California in San Diego County in 2004 and has steadily advanced towards Palomar from the heavily infested Descanso and Julian areas. Last year about 100 infected trees were found on Palomar Mountain, primarily on the eastern side. Because the GSOB has insufficient natural enemies in California, oak mortality is high—estimates are that 80% of infested oaks will eventually die. Since the beetle itself flies only a short distance, the GSOB is primarily spread to new areas by larvae present in transported firewood and logs from infested oak trees. Ultimately, susceptible oaks throughout all of California and southern Oregon are at risk of GSOB infestation and tree death, destroying habitat and vastly increasing wildfire danger.

On Palomar, GSOB preferentially attack and kill live oak, canyon oak, and California black oak. Other oaks, such as Engelman oak, are at lower risk. Mature, large diameter oaks with trunks and limbs greater than 10 inches in diameter are at highest risk for injury and mortality from GSOB. GSOB

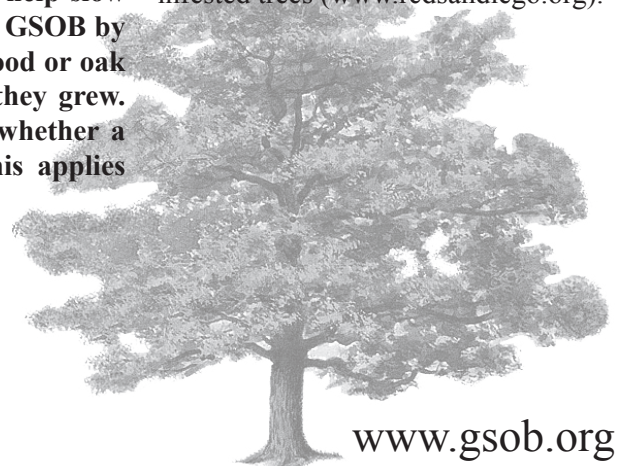
infestation of healthy trees occurs from mid-May through October when mature females emerge and fly to healthy oak trees to feed on leaves, mate, and then lay eggs in fissures on the main trunk and large branches. After hatching, the larvae bore through the bark and take up residence in the tree layers just beneath the bark where they feed and mature over the next several months, emerging as mature, adult GSOB to begin the GSOB infestation process again. Three to five years elapse between the initial infestation and oak tree death due to extensive larval feeding. Larvae continue to mature and emerge as adult GSOB for up to one year after tree death. The tiny beetle itself is seldom seen. Instead, GSOB infestation is identified by the presence of the characteristic D-shaped adult emergence holes in the bark on the tree trunk. These small (4 mm wide) holes are better seen at night by flashlight. External signs of GSOB infestation include progressively more severe crown thinning and dieback, a change in leaf color from dark green to grayish green, dark or deep red sap stains on the tree trunk, noticeable woodpecker damage, and eventually tree death.

Control of the GSOB is difficult. **Most importantly, we can help slow the geographic advance of GSOB by not moving any oak firewood or oak logs from the site where they grew. Since it is hard to know whether a tree is infested or not, this applies**

**to ANY oak wood. Likewise, do not bring any oak firewood from elsewhere up to the mountain.** High concentration contact spray and systemic insecticides can be applied to the trunk of high value oaks to prevent infestation and limit damage, but must be repeatedly applied by a certified professional every 1-2 years in May and from November to February respectively before the female adult beetles emerge and fly to and feed on un-infested trees. Since application of insecticide is impractical for all except very high value trees, the only “treatment” is felling severely infested trees to slow the spread of disease to healthy oaks nearby. The felled wood should immediately either be burned, ground into small shreds (3”X 1” X 1/2”), or contained by covering completely for two years with a well-sealed, clear plastic tarp.

To help track GSOB on our mountain, report suspect trees to the University of California Extension Service website ([www.gsob.org](http://www.gsob.org)) which is an excellent source of further information about GSOB identification and management. The Resource Conservation District of San Diego County also has personnel to help residents identify and manage infested trees ([www.rcdsandiego.org](http://www.rcdsandiego.org)).

*External signs of GSOB infestation include progressively more severe crown thinning and dieback, a change in leaf color from dark green to grayish green, dark or deep red sap stains on the tree trunk, noticeable woodpecker damage, and eventually tree death.*



[www.gsob.org](http://www.gsob.org)

---

# PALOMAR MOUNTAIN VOLUNTEER FIRE DEPARTMENT REPORT

*By Suzann Leininger*



**T**he Board of Directors met with County Supervisor Bill Horn's office on April 14th. We met to ask for funding to get permanent staffing for a couple of CALFIRE fire fighters along with County Reserves (volunteers). CALFIRE has been temporarily staffing the station, along with Reserves, since the beginning of the year.

We requested that this staffing pattern remain permanent. We feel that having consistent staffing in the department will allow for better mentoring and training for the Reserves that come to work in our community.

We do not know the outcome yet, but we were told that they understand our concerns and are working on a plan for us. We were also told that it may take a couple of months to come up with a solution.

The last day for CALFIRE staffing at the station was the morning of April 17th. There have been some days that the station was not staffed which is a huge concern for all of us.

Through our recent research to prepare for this important meeting, we discovered the following information:

Census Information (2015): Total Population: 206 / Population 50+: 92 / % Householders 55+: 55%

## **Visitor Information (2015)**

With the Observatory, State Park and Christian Conference Center, we discovered that there are over 242,000+ visitors a year to Palomar Mountain. That is just what we were able to find numbers for. Not included in those numbers are the motorcycle, bicycle and car clubs. Other attractions are Bailey Meadow Resort, the Yoga Center and unknown organized events that come to the mountain.

(760) 742-3701  
FAX: (760) 742-0574  
[www.palomar-fire.org](http://www.palomar-fire.org)



21610 Crestline Road  
P.O. Box 235  
Palomar Mountain, CA. 92060

---

## NEXTDOOR PALOMAR MOUNTAIN

*By Alan Serry*

In 2015 we started a communication network called Nextdoor Palomar Mountain.

Description: Nextdoor.com is the free, private social network for you and our community.

It's the easiest way to connect and talk with your neighbors about the things that matter on Palomar Mountain.

Neighborhood Watch and San Diego County Sheriff's Department encourage communities to use Nextdoor.com

Neighbors are using Nextdoor.com to: Quickly get the word out about a break-in or suspicious activity, receive notifications of Palomar Mountain community events, list items for sale, list free items, share neighborhood concerns, ask neighbors for help finding a lost pet, etc. To receive an invitation to join, please contact Alan Serry via email [alserry@msn.com](mailto:alserry@msn.com) or by phone 760-533-1268.