



PMPO

Spring 2006 - Volume 17

The Palomar Mountain Planning Organization

Board Members: Tom Burton, Robert Carlyle, Tracy Dixon, Donna Dose, Bruce Graves, Jim Hamerly, Rob Hawk, Susan Humason, Scott Kardel, Elliot Miller, Jack Norvall, Bonnie Phelps, Michael Pique, John Tainer/Elizabeth Getzoff, Earl Walls

A Message from the Chair

By Bruce Graves

The issues your PMPO Board has been mainly concerned with this past year are:

1. The aquifer just under the top of the mountain.
2. Just where the Center line of section 14 should be.
3. The San Diego General Plan 2020
4. A Community Center Building

Until recently our aquifer concern had to do with the Yale water exporting project near Cedar Creek. Now that project has changed hands. The Yale land is now becoming part of the La Jolla Indian Reservation and the Indians will be pursuing the project. Despite all our efforts to convince the Bureau of Indian Affairs that the project was not a good idea, the land transfer is probably a done deal. We have met with the Indians involved with the project. I believe

they are good people very concerned about the environment. They have agreed to monitor the surrounding nearby well and say they will stop pumping if our wells are in danger. I believe they are far more interested in protecting the mountain top than Mr. Yale might have been.

The center line of Section 14 is an East West line roughly parallel with Crestline Road and about a half mile down the South face of the mountain. Much of the survey data locating parcels in the Crestline and Birch Hill subdivisions depends on just where the center line is. This line was moved by a 1985 Forest Service survey. We are now hoping to work out a land swap with the Forest Service. This would restore the property along the Crestline side of the line to the original owners and settle the dispute.

The San Diego General Plan 2020 is moving forward slowly. More information is found on page three of this newsletter.

The PMPO continues to support and

promote a Community Center Building for Palomar Mountain. The Palomar Mountain Volunteer Fire Department (PMVFD) has now become the lead organization for this Project. This makes a lot of sense since the PMVFD will be using the basement floor for Fire Department purposes. The new building will be called the Palomar Mountain Community Safety Center.

Read more on these and other issues facing our community in the rest of this newsletter.

The PMPO Board request your continued help, participation and support. The Board promises our best efforts to accomplish our mission. Sincere thanks for your much-needed contributions. A return envelope is enclosed for your convenience. As always, I am looking forward to seeing you at our Annual Meeting and Pancake Breakfast May 27th to be held at the Fire Station / Community Safety Center.

Bruce Graves
Chairman
bruceg1288@earthlink.net



Mark Your Calendars

All Mountain Residents & Visitors are Welcome to Attend...

PMPO Pancake Breakfast

Saturday May 27, 2006
Fire Station/Community Center
8am-11am
The Annual Meeting follows Breakfast.

The Community Safety Center

By Earl Walls & Scott Kardel

In case you are wondering about the title, here is a little up-date.

As most everyone knows, when we got underway with studies for a Community Center Building a couple of years ago we concentrated on a design that was to serve the community as a place to hold meetings, various fund raising events, a place in which people could meet for club activities, and should the need arise, to serve as a place of refuge.

At that time, Jay Ackerman was serving as the chief of the PMVFD. When he had to step down due to work load he was able to convince George Lucia to fill this role. George has made an impact, not only on

the fire department, but upon the design of the Community Center as well.

The basic role and design of the Community Center has not changed from that described above. But, George saw the need for ancillary space in support of the Fire Department. Under his stewardship the number of fire fighters has grown from 14 to 27, and the intent is to grow to 30. The station house is full of equipment, thanks in no small part to the fundraising skills of our former chief Karl Bauer. The firefighters need dormitory space for overnight duty firefighters, a place to hold training sessions, office space, rest rooms, etc. The positioning of the Community

Continued on Page 4

PMPO Re-Elections:

Five Board Member Positions Are Up Re-Election

Board Members for Re-Election
Include:

Elliott Miller

Tracy Dixon

Mike Pique

Rob Hawk

Earl Walls

Palomar Mountain Planning Organization (PMPO)

Box 145 • PALOMAR MOUNTAIN, CA 92060-0145

This newsletter is produced annually and distributed in May of each year.

Without the help of many volunteers, this newsletter would not be possible.

Coordinator: Susan Humason

Editors: Elizabeth Getzoff & Michael Pique

Reporter: Bonnie Phelps

Article Contributors:

Bruce Graves, Earl Walls, Tom Burton, George Lucia,
Elizabeth Getzoff, Scott Kardel, Bonnie Phelps, Kim Rosiar,
Shana Ackerman, Tracy Dixon, Michael Pique, Jack Norvall

Assemblers:

Thanks go out to the many individuals that help each year with the assembly and mailing of the newsletter. They all make it possible to get the newsletter out on a timely basis.

If you have any information that you would like to contribute to future newsletters, please email the information to:

pimage1@sbcglobal.net - attn: PMPO Newsletter

PMPO

Annual Meeting Agenda

11 AM Saturday May 27th, 2006

Palomar Mountain Fire Station /
Community Safety Center

Pancake Breakfast 8 to 11 AM

1. Call to order 11 AM
2. Secretary's Report
 - A. Approval of May 28, 2005 Minutes
 - B. Treasurer's Report
3. Reports from Local Organizations
 - A. Palomar Mtn Volunteer Fire Dept...
George Lucia Chief
 - B. Palomar Mtn. Observatory...
Scott Kardel
 - C. Fire Safe Council..Shana Ackerman
 - D. Community Safety Center...
Earl Walls
4. Activity Reports
 - A. Cedar Creek Water Project Status
 - B. Dual Survey - Section 14 centerline
 - C. General Plan 2020
 - D. Motor Cycle Safety update
5. Elections (5 seats open on the Board)
 - A. Nominations from the Floor
 - B. Introduction of Incumbents and
Nominees
 - C. Balloting
6. New Business
7. Election Results
8. Adjournment

General Plan 2020

by Tom Burton

San Diego County's General Plan 2020 continues to unfold at what feels like a snail's pace. Behind the scenes, no doubt, there are many studies and regulatory requirements being met. Your PMPO's subcommittee continues to monitor that process actively.

As you by now know, general plans are required by State law for each county. Generally, they take years to prepare, and cover a twenty-year period. San Diego County's General Plan for the years 2000 to 2020 has been in the drafting process for about eight years. Because of the importance to our Mountain, your PMPO has been meeting with County planners and supplying input to them since the start of this process.

With respect to land use matters, a general plan is the law - a statement of broad-brush principles that is really expensive, time-consuming and laborious to change (except every twenty years when it's redone).

Zoning laws implement the general plan. You can't get zoning on a property that is in conflict with the general plan, hence, the general plan is really important.

2020

You may recall, the PMPO and community interest was peaked in the General Plan's process by the down-zoning that occurred to the commercial parcels that constitute the "Summit" as a result of the Forest Conservation Initiative. Because of the long range impact of the General Plan and its impact on zoning, your PMPO has mounted quite an effort to study

Newsletter Table of Contents

Article	Page
Message From the Chair	1
Community Center	1
Re-Election Information	2
Annual Meeting Agenda	2
General Plan 2020	3
Treasurer's Report	4
Palomar Mountain School	5
Palomar Observatory	5
Palomar History Books	6
Palomar Christian Conference Center	6
Yale Well Pumping Project	7
Section 14 Dual Survey Problem	7
Community Tidbits	8
Mother's Kitchen	9
Palomar Mtn. Gen. Store	9
Community Websites	9
Pal Mtn Vol Fire Dept	10
Fire Safe Council	10
Palomar Mountain State Park	11
The Past Decade in Real Estate	11
The Henshaw Grill	12
Lake Henshaw Resort	12
My Country Club	12
Oak Knoll Campground	12
PMPO Recognition	13
Bailey's Palomar Resort	13
PMPO Pancake Breakfast / Meeting	14

County documents and proposals, inform the community of what is going on, collect their input and share that with the County.

Our position continues to be that the Mountain's commercial property should be restored to their prior "commercial" zoning, as opposed to the current "rural residential" which they became in the down-zone. The effect of this is that, should the Summit burn down, it could not be rebuilt except in the same footprint, effectively taking away the landowner's flexibility with their property and how they serve the community. Remember the Summit buildings were built in the first half of the last century and we've lived with the continuous fire threat for years.

Our other main point is that greater than one dwelling unit per 40 acres should be allowed for property owners at the top of the Mountain near the Summit where slope and other conditions make that clustered zoning appropriate.

Our main way to accomplish these two objectives had been to have Palomar designated as a "Country Town." Your sub-committee has continued to make these three arguments (the "Three C's: commercial, clustering, and Country Town") to the Planning Commission, Board of Supervisors and staff, whenever an opportunity arises.



The Community Safety Center, continued from page 1

Center on the site of the existing house next to the station is a natural for the inclusion of a second level to serve the fire department needs.

Maybe by coincidence, the Fire Department space program is an almost perfect match to the space required for the Community Center function.

This two story building requires construction techniques beyond the capacity of our "do it yourself" volunteers; and it has a price tag that puts it out of the feasibility of being funded by the block program of the local state and county agencies.

Thus, we have two entities that will work together to procure funding and to get the building constructed: The Community Center of Palomar Mountain, Inc. and The Palomar Mountain Volunteer Fire Department (PMVFD). The former is classified by the internal revenue as a 501(c)4 organization, and the latter as a 501(c)3 organization. The 501(c)3 classification is the better one for our purposes.

As the two-acre site upon which the station is located is owned by the PMVFD, it was first necessary for its Board of Directors to approve the use of the proposed site for the dual purpose building. This has been done.



Each Board of Directors (BOD) is comprised of five members, and together this number is too large for getting things done in a timely manner. In a joint session of the two boards, the decision was made to create an action committee to oversee the development task. This committee is comprised of two members from each board, plus one outsider. Fire Chief George Lucia and building designer, Earl Walls, are in attendance at the request of the committee as resource persons only, and have no vote in the proceedings. The two members from the Community Center BOD are Tom Burton and Scott Kardel, and from the Fire Department BOD Robert Carlyle and Linda Thorne. The non-BOD member is Bonnie Phelps. Also available to the Committee in resource and advisory roles are Assistant Chief Henry Vargas and President of the PMPO, Bruce Graves. Please be aware that anyone is welcomed at the committee meetings, but should you wish to speak, please contact any member prior to the scheduled meeting so you may be placed on the agenda. Now, back to why the name is Palomar Mountain Community Safety Center. The two BODs totally agree that the primary function of this proposed building is to serve the residents and visitors as a place of refuge in event of a disaster that would block our means of egress. Basically, Palomar Mountain has only two access roads for conventional transportation: S-6 South Grade Road, and S-7 East Grade Road. Either or both of these could easily be blocked by such things as fire, earthquake and landslides. Even the recent heavy snowfall had some persons in a not too comfortable situation. Thus, the shelter aspect is at the head of the list.

Having safety as the primary expression of need should certainly be of help when seeking out government funding and gifts from private resources.

PMPO Treasurer's Report

Dec. 31, 2004 to Dec. 31, 2005

by Tracy Dixon, Treasurer



Balance Carried Forward	\$31,956.19
Income:	
Donations	\$7,317.56
Pancake Breakfast	<u>\$629.00</u>
Total Balance	\$39,902.75
Expenses:	
U.S. Stamps Newsletter	\$420.00
Pancake Breakfast Food	\$257.95
U.S. Postal Stamps	\$74.00
Office Supplies (Labels)	\$21.53
State of California	\$20.00
Newsletter Printing - Premier Image	\$735.00
Pancake Breakfast Supplies	\$171.54
P.O. Box Fee	<u>\$36.00</u>
Total Expenses	\$1,736.02
Ending Balance	\$38,166.73

Will the Palomar Mountain School Be Closing? *by Tom Cunningham*

The Valley Center/Pauma Valley School Board is underfunded and will announce its decision to either close Palomar Mountain School or reduce the teacher to half time at their board meeting on May 11th at 6:30 PM at Valley Center High School on Cole Grade Road in Valley Center.

Residents of Palomar Mountain and supporters of the School are encouraged to attend this meeting to show how important the School is to both the children and the community.



An Update from the Palomar Observatory

by Scott Kardel

It has been an amazing year at the Palomar Observatory. Last summer we made a big splash with a public event and announced a major astronomical discovery, however there are issues that are causing an adverse affect on our nightly observations.

There has recently been a fair amount of turnover in the home ownership here on the mountain. Some of the new neighbors may not be aware that their porch and other outdoor lights can hinder observations made at the observatory. Additionally the recent tree-thinning projects, much needed for fire safety, have opened up new avenues for porch and other local lights to shine their way into the sky and toward the observatory. These outside lights do affect our operations. While there are not as many people living on the mountain as there are in the cities down below, the lights up here are much closer. A single 100-watt bulb at a home on Palomar located just 2 miles (as the crow flies) from the observatory is as disruptive to us as over 550 100-watt bulbs in downtown San Diego! We've spotted many places on the mountain where people have been leaving their porch lights and flood lights turned on all night. Please remember to turn lights off when they are not absolutely needed.

Later this year the observatory hopes

to host an event just for mountain residents to explain the how we operate, what we are learning about the universe and how outdoor lights hinder observations. Details will be announced this summer.

One of the highlights of astronomical research from last year was the discovery of an object that some are calling our solar system's tenth planet. Last summer Caltech's Mike Brown and his partners announced the discovery, which was made using Palomar's 48-inch Samuel Oschin Telescope. Since then astronomers have learned many things about the new object, including that it is 25 percent larger than Pluto and that it sports a moon. The astronomical jury is still out on the issue of whether or not to call it a planet. Until that issue is resolved it will not get an official name beyond its current one which resembles a catalog number: 2003 UB313.

Last June the observatory held its first-ever public open house. Well over 4,000 people made the trek to the observatory to get a tour of the 200-inch Hale Telescope. For many it was their first close-up look at the famous telescope, which for generations was the largest one on the planet.

Parking proved to be a difficult for the event, but the observatory staff carefully guided drivers into hastily created spots on the observatory grounds. Others parked along the road up to a mile away and hiked in. The line to tour the Hale Telescope rapidly grew to epic dimensions. Some people waited more than two hours for their

tour. As the line grew the pace of tours was accelerated. Everyone that stayed in line was brought into the dome for a look around before the day ended.

In addition to tours of Palomar's 60-inch telescope and the Palomar Testbed Interferometer, visitors were able to listen to astronomers from the California Institute of Technology and the Jet Propulsion Laboratory give talks on a wide range of topics including future large telescopes and the hunt for killer asteroids. Visitors were also able to see 3-D images and animations of the Hale Telescope, learn about light pollution, and safely view the Sun through small telescopes provided by Oceanside Photo & Telescope.

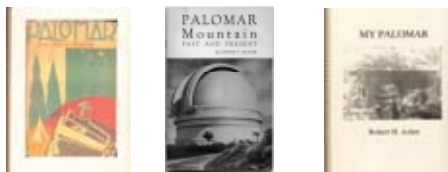
Rounding out the day was an impressive display of fire trucks and information from the Palomar Mountain Volunteer Fire Department, the Cleveland National Forest, the Palomar Mountain Fire Safe Council, and the California Department of Forestry. There was even a visit from Smokey Bear.

For more information on the observatory visit our website at: www.palomar-observatory.org



Palomar History Books

Peter Brueggeman, who hosts a Palomar Mountain History website at palomar.peterbrueggeman.com, is working on new revised editions of the Mountain history books by Catherine Wood, Marion Beckler, and Robert Asher. These fascinating books are available at the Palomar Mountain General Store, the Lake Henshaw Store, on the internet at www.dayoutings.com or by calling Susan Humason at 858-922-7692. 30% of all proceeds are donated to the Palomar Mountain Fire Safe Council.



These new revised editions represent fine-tuning: author errors both by the original author and by Peter (oops) are corrected, some new photographs added to better illustrate the authors' text, and some new information added here and there, including more complete personal names verified from General Land Office records and other sources. Each book includes: individual historic accounts, old, treasured photos of the early 1900s and never-before released accounts of life on Palomar Mountain.

Peter is also compiling materials for a Mountain history book intended for publication late this summer provided sufficient material is compiled. He has been soliciting text and photographs from a few prospects and wants more. If you are interested in sharing text you've written on Mountain history as well as your Mountain historical photos with Peter for incorporation into this upcoming Mountain history book or future Mountain books, please contact him at pbrueggeman@ucsd.edu or (work) 858-534-1230 or (home) 858-535-9577. More material is always needed, and would increase everyone's appreciation of Palomar Mountain history.

See What's New At the Palomar Christian Conference Center

By Kim Rosiar

We have Paintball!! That's right, paintball has come to Palomar Mountain. The course has been established just down the ridge from the Anderson, Johnson and Davis Lodges. We have enough markers and safety equipment to outfit 20 players per session. Guest groups, including the ladies, are just loving it!

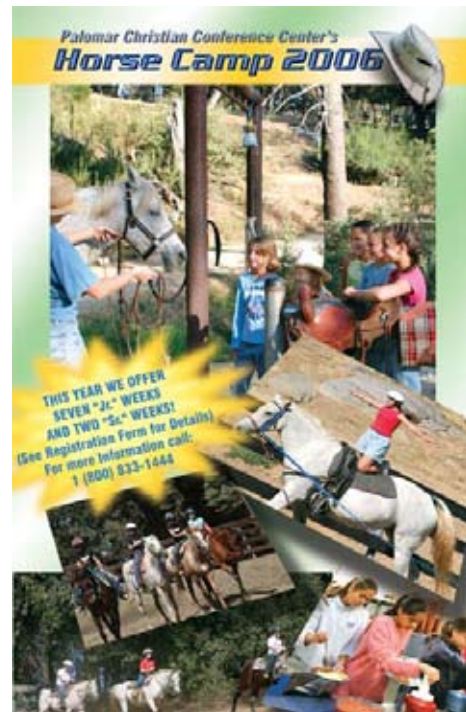
Boy's *Outdoor Adventure Camp* is being expanded to six, week-long sessions. The 2006 camp dates: June 18 – 24, June 25 – July 1, July 2 – 8, July 9 – 15, July 16 – 22, and July 23 – 29. *Outdoor Adventure Camp* is a great opportunity for boys 11 -14 years of age to have FUN and learn skills they can use the rest of their lives, like personal strength-building, team building and the value of healthy self-esteem – and its all outdoors in the majestic environment of our own Palomar Mountain.

Girls Horse Camp is alive and well under the guidance of our new Program Director Holly Stover. 2006 camp dates begin on Sunday, June 18 and run for 9 consecutive weeks. We will have seven junior weeks and two senior weeks this year.

Development is well under way for an *Outdoor Education Program* to have available for school groups.

We are working on the finishing touches of a Media Room for group leaders and pastors, so they can have access to a business center while at camp.

The Dining Room has been slightly renovated to allow for easier flow through the buffet line and eliminate the congestion at the soda machines. A beautiful slate tile floor has replaced the carpeting in these areas.



Finally, the Recreation Vehicle Site Project is in its final stages. Last fall the site was graded and the entire maintenance road and overflow parking area has been blacktopped. The ten RV pads will be constructed this spring complete with the usual water and septic hook-ups, but we will go a step further in providing telephone and high speed internet access to each site as well as a volunteer building where they can meet and fellowship together. The vision for building this site was to entice volunteers to come from across the country to spend time on Palomar Mountain helping us build future elements of the Master Plan.

As always, we invite our mountain neighbors to visit us anytime and see the progress and enjoy some conference center hospitality. If you have a desire to volunteer your services, please call Kim Rosiar at 742-3438 or Ken Morrish at 742-4488.

Yale / La Jolla Indian Tribe Well Pumping & Land Transfer Project

By Elizabeth Getzoff

The Bureau of Indian Affairs (BIA) in Sacramento approved the Environmental Assessment (EA) for the La Jolla Reservation Fee-to-Trust Land Transfer and Water Pipeline Project in July 2005, over significant objections from the Palomar community. This project sets a precedent for the first export of pumped well water from Palomar Mountain. PMPO concerns focus on possible risks to Palomar Mountain's water supplies, fire safety and the environment. The well is next to Cedar Creek on land along East Grade Road owned by Mr. William Yale. Nearly 15 years ago, Mr. Yale drilled this deep well to pump and export water, but failed to complete San Diego County's requirements for a Major Use Permit. In the current proposal, the land and well would be transferred to the adjacent La Jolla Indian Reservation, which, as a sovereign nation, is not subject to County regulations. The Tribe, in a joint venture with Mr. Yale, proposes to construct and export water through a pipeline down the South face of Palomar Mountain. The EA and the joint venture agreement, which has not yet been made public, set limits on the amount of water to be exported, but these limits can be overridden by any California-certified hydrogeologist. More detailed information on the EA is available at www.palomarmountain.com. Next, the Tribe will submit the land transfer application to the Realty Department of the BIA office in Riverside.

Recently, representatives of the PMPO and the La Jolla Tribe had a productive meeting, opening communication channels on this water project. The Tribe expressed sensitivity to environmental concerns, and agreed to monitor Palomar wells and to provide monitoring data directly to the Palomar community. The PMPO plans to gather as much well monitoring data as possible in advance of the proposed pumping. We encourage ongoing positive communication with the La Jolla Tribe on this and other issues relevant to the shared Palomar community, including plans for a La Jolla Indian casino and hotel, and the threatened closure of the Palomar Mountain School.

Section 14 Dual Survey Problem

By Jack Norvall & Michael Pique

Most of Crestline and all of Birch Hill is located in federal government survey Section 14, and in 1975 a new government survey moved Section 14's center line north so that the National Forest took over about 18 acres more land than it had before.

This cost Palomar many residents along the entire mile-long line their right to build on their properties. Even though the PMPO is still trying to resolve this "dual survey" problem by locating old property markers and documents, the burden of proof is on us and has turned out to be difficult to achieve.

So the PMPO has begun a separate approach to resolving the parcel-shrinkage problem, by swapping land with the U.S. Forest Service. The idea is that the PMPO would locate a landowner willing to donate 18 acres to the Forest Service. In exchange for this land, preferably next to the Cleveland National Forest, the Forest Service and the federal Bureau of Land Management would restore the Section 14 center line to its long-accepted location.

Jack Norvall and Bruce Graves are now making appointments to discuss the proposal with officials at the the Forest Service offices, first in San Diego County, and then in Sacramento.



The PMPO Board of Directors, Spring 2006

Top Row: Robert Carlyle, Michael Pique, Jim Hamerly, Rob Hawk

Second Row: Donna Dose, Thomas Burton, Earl Walls,
Bonnie Phelps, Tracy Dixon

Bottom Row: Susan Humason, Bruce Graves, Elizabeth Getzoff,
Jack Norvall

Not pictured: Scott Kardel, Elliot Miller, John Tainer

Community Tidbits... from Bonnie Phelps

Walk For The Mountain

Are you tired of looking at all the trash left on the ground on the Mountain? With a nice hike we all can join together to do something about it. Look for upcoming e-mail from the Mountain News (see page 9 to sign up). Let's all get together for a local effort to do a clean sweep of the Mountain when the weather gets warmer. Meanwhile, here is a suggestion: When you head out for a walk, you might fold up a plastic grocery bag to tuck in each pocket. Along the way, you'll have those bags filled before you know it and we can all enjoy a cleaner Mountain!

Burning Permits



We had a couple wind storms this winter that brought down a tremendous amount of branches and some trees too. Wondering what to do with all the trimmings after 'parking up' your property? Would you like to have a campfire or burn your cut brush? A permit is required. Permits are available only when the US Forest Service feels it is safe. After a rain or snow is often a good option. Call the US Forest Service 760-782-3472 or 760-788-0250 to help keep our forest green and fire safe.

Blooming Daffodils!

Several thousand new daffodil bulbs are alive and well after our big snow. Thanks to the folks who donated the bulbs and did the planting, we are all benefitting from the burst of color! When daffodils are planted in the fall in a sunny location, you can simply 'forget about them' until they paint the landscape with color in the spring and keep coming back year after year. Wal-Mart proved to be a great place to buy bulbs last year. Or if you would like to donate 'Dollars for Daffodils', a group of volunteers will get them planted in the fall. (We're careful to avoid the Forest Service property.) Watch for the 'Dollars for Daffodil's vases at Mother's Kitchen, the Post Office and Store. We'll also give you a chance to donate or sign up for our Planting Parties at the Pancake Breakfast. More Info?

Contact Colleen Kenyon
Pegleg46@aol.com
760 742-0249 or visit
www.palomarmountainnews.com/mtn/daffodills.index.html.



Palomar Mountain Soap Company

Thanks to so many of our mountain neighbors, we have had a wonderful first year as the newest business on Palomar! We invite you all to stop by and watch our hand-crafted soap being made and see our new things. We have lots of new scents this year which include Spruce Forest, Cactus Flower, Mocha Java, and, yum, Fudge Brownie. Stop in to see our new molds with horses, gingerbread men, and even dancing frogs. New accessories now include bath salts, body brushes, and back massagers to tuck in our gift baskets.

We are open on Friday 11am to 5pm and Saturday and Sunday 10am to 4:30pm. If you miss us, our soaps are also available in the General Store. Please mention the PMPO newsletter for 10% off. We will also be open for you on Monday, Memorial Day. Come by and enter our drawing. The winner wins one bar of soap for six months!

Anandamayi
760-742-8757

The Mountain Church

When you are on the mountain on Sundays, you are invited to visit the Palomar Mountain Community Church. See a clear view from the mountain top of what God is doing on Palomar to give hope and joy and peace!



Take time to browse our new website: www.themountainchurch.com Can't make it to church? You can 'Listen on Line' or we have CD's available. The website is updated each week by Tuesday noon with the latest message from the Mountain Church. Our "Sunday Mornings" link will answer those questions about where and when, and you're always welcome at the upcoming events. You can read about the latest on the ever-changing home page. Or, we are glad to mail or give you information over the phone. Concerns? Questions? May we help you? The pastor is on the Mountain on Thursdays and Sundays.

All God's Best to You,
Pastor John Shackelford • 619-440-2450 • e-mail jdshack@cox.net

Mother's Kitchen

There is always something good cooking at Mother's! Stop by to try something new! We're open to serve breakfast on Monday morning, Memorial Day. Mention that you read your PMPO newsletter and your breakfast is half price!



Scott Morningstar
760 742-4233
www.MothersKitchenPalomar.com



Palomar Mountain General Store

Add beauty to your life. Come visit Palomar Mountain General Store. When you find that perfect gift during the melodious month of May you'll receive a 10% discount in appreciation. We had a wonderful buying spree at the Gift Show with deliveries arriving every week so you are sure to find new treasures. We have for you new designs on sweatshirts and tee shirts with the Mountain theme, and the recently published books on Mountain history are all available.

We have new arrivals all the time, and are continually expanding our book and card collection. You are invited to use the 10% discount on gift items as many times as you want, so stop by often!

What is new at The Store? We have a website...

www.PalomarMountainStore.com
for your browsing pleasure.

Always remember, when you are on the Mountain during the week when the Restaurant is closed, there is free coffee for the locals here at Palomar Mountain General Store. We sincerely thank you for your patronage and may you thrive!

Francisco and Pascale
760-742-3496

www.PalomarMountainStore.com



www.Community Websites

Serving Palomar Mountain since the twentieth century, thanks go to Mike Pique for hosting www.palomarmountain.com. Visit Mike's site to see hundreds of pictures, and read past, present and future news.

A second website is up and running as an additional resource for information about our favorite Mountain. Thanks to weekender Brian Wagner for developing www.palomarmountain.org. You'll enjoy surfing his site!

What's Happening on Palomar?

We now have an interactive calendar of events. When your organization has something coming up, you can go into this new webpage and enter the event yourself at <http://my.calendars.net/palomarmountain>. It is simple, and fun to do, and will keep us all up-to-date on the latest happenings!

Palomar Mountain News Broadcast

Since 1998, property owners and residents have been able to subscribe to a free e-news broadcast. Serving the Mountain in a way similar to a newspaper, you receive messages to keep informed of the happenings in our community. If you were getting the news in the past, and haven't recently, sorry, those spam blockers have been working overtime! Many of you have also changed your address throughout the years. If you wish to receive news of our favorite Mountain, simply subscribe to or update your address at: www.palomarmountainnews.com.

You'll have a reply with suggestions to get setup so the Mountain News doesn't get blocked or sent to your 'junk e-mail box'. We'll keep the news of your favorite Mountain heading your way!

Palomar Mountain Volunteer Fire Department Update...

By Fire Chief George E. Lucia, Sr.



The past year has been a growing and healthy year for the Palomar Mountain Volunteer Fire Department (PMVFD).

Our ranks have swelled to 27 firefighter members (up from 14 at the same time last year).

The PMVFD continues to train in the latest medical, rescue and fire fighting methods.

We are currently working on the following projects:



Volunteers from Palomar Mountain Fire Department aid a crash victim.

- ÿ Community Safety Center Project
- ÿ Community AED Project (Automatic Electronic Defibrillators)
- ÿ Community C.E.R.Ts Program
- ÿ Community Early Warning System
- ÿ Community Communication Committee (radio-internet-ham radio)
- ÿ Emergency Call Boxes for the mountain roadways
- ÿ Enhanced Mile Markers for the mountain roadways
- ÿ Additional Guard Rails in dangerous areas
- ÿ Emergency Heliport project
- ÿ GPS Marking of Water Supplies and Local Addresses
- ÿ New Training and Communications Room in the Fire Station



I thank the P.M.P.O and the entire community for their continued support.

George E. Lucia, Sr.
Fire Chief
Palomar Mountain Volunteer Fire Department
Cell: 760-644-9933
george.lucia@nextel.blackberry.net

Volunteers from the Fire Department and the community help build the new room at the Fire Station.

The Palomar Mountain Fire Safe Council

By Shana Ackerman

Great News!

The Palomar Mountain Fire Safe Council (PMFSC) has received notice that we have been chosen for partial funding. The US Forest Service is giving us 1/3 of the money we requested. This will allow us to help many of you with the 100 ft. ordinance requirements and with tree damage that you may have had from the snow. The PMFSC will be meeting the clearance requirements to receive the funding over the next couple of months. We hope to be able to start work on the mountain as early as May, before we the fire season starts. Funding is scheduled for November, but in the past, the US Forest Service has understood the need of doing the work in the Spring, before it is too hot and then again in the Fall before it starts to snow. We will keep everyone posted.

Shana Ackerman, PMFSC President/ Chairman
P.O. Box 274 • 760-742-8787 • Shaaaney@aol.com



New Happenings at Palomar Mountain State Park

By Jeff Lee, Supervising State Park Ranger

Park visitors will soon be able to enjoy some new facilities, and the repair of existing facilities at the Boucher Fire Lookout area. We were able to secure some funds from the passage of the parks bond approved by voters a few years ago and funds for ADA (Americans with Disabilities Act) accessible facilities. The new facilities will be ADA wheel chair accessible. This project is currently under construction and is due to be completed in April 2006.

A new self-composting restroom is being installed that will convert

human waste to compost. A new scenic view observation deck is near completion. This deck will stand a few feet above the current ground level. This observation deck will offer an improvement of the already spectacular view from the park. In the near future this deck will become an educational stop for school camp students on their park hikes.

New walk ways and drainage have already been completed. A large patch of asphalt with structural failure is being cut out and will be hot asphalt repaired. A small area of the historic stone walls will be repaired.

Repair and chip seal of the parking area will be completed to the extent of the allocated funding remaining. I estimate about one quarter of the parking area.

We continue to remove vegetation around park structures and along park roadways to improve fire safety for the park and for mountain residents. We have been and will continue to conduct prescribed burns in the park while we have safe conditions to do so. State Park Personnel and CDF fire crews have been able to remove a large amount of fuels this year.

The Past Decade in Real Estate *By Bonnie Phelps*

Looking back over the past 10 years, we've seen quite a change in activity and prices. The Multiple Listing Service records for 1996 and 1997 show eight homes sold during those TWO years ranging in price from \$25,000 to \$150,000.

1998 and 1999 each had eight homes selling per YEAR with the highest \$252,500.

2000 through 2003 we averaged 11 per year with pricing jumping again up to \$420,000, with the majority LESS than \$200,000. The past three years have each had 20+ homes a year changing owners on Palomar. Last year the lowest fixer sold for \$85,000 with the majority selling for MORE than \$200,000, up to \$535,000. However, including a couple new homes built recently, there are now only a total of 201 homes and cabins listed in our zip code. Because of the County restrictions, it is highly unlikely that we'll have many more.

In Robert Asher's wonderful book, My Palomar, written in the 1930s, the author tells how he was called upon for a speech at a Fourth of July Celebration. He told about the future development of the mountain and we read, "In 1902, I had become more ambitious for the mountain's future, and while I did not foresee the coming to Palomar Mountain of the greatest telescope in the world, I did envision thousands of summer homes and hundreds of little craft and work shops, to say nothing of electric roads."

This development did not happen as Mr. Asher believed on our beloved Palomar and a choice bit of real estate it continues to be.



Down at The Henshaw Grill

The Henshaw Grill would like to extend a huge thank you to the Palomar community for their faithful support and patronage. We have successfully made it through our first year of business. It has been a year filled with tears and laughter as we have grown from the hard times and rejoiced from our successes along the way. We have been reunited with many old friends and established some wonderful new friendships. The local support we have been blessed with has helped us to establish a strong foothold in a difficult industry.

The Henshaw Grill has been hosting music on Friday nights, which has been a great way to support our local musicians, and socialize with others in our community. If you haven't checked out the Friday night festivities, we would like to invite you to do so. We offer a 10% discount to locals! So next time you stop in, please let your server know you live in our local community. Thank you again for a wonderful first year and we look forward to seeing you soon!

Meriah Druliner & Jenna Allen

26439 Hwy. 76

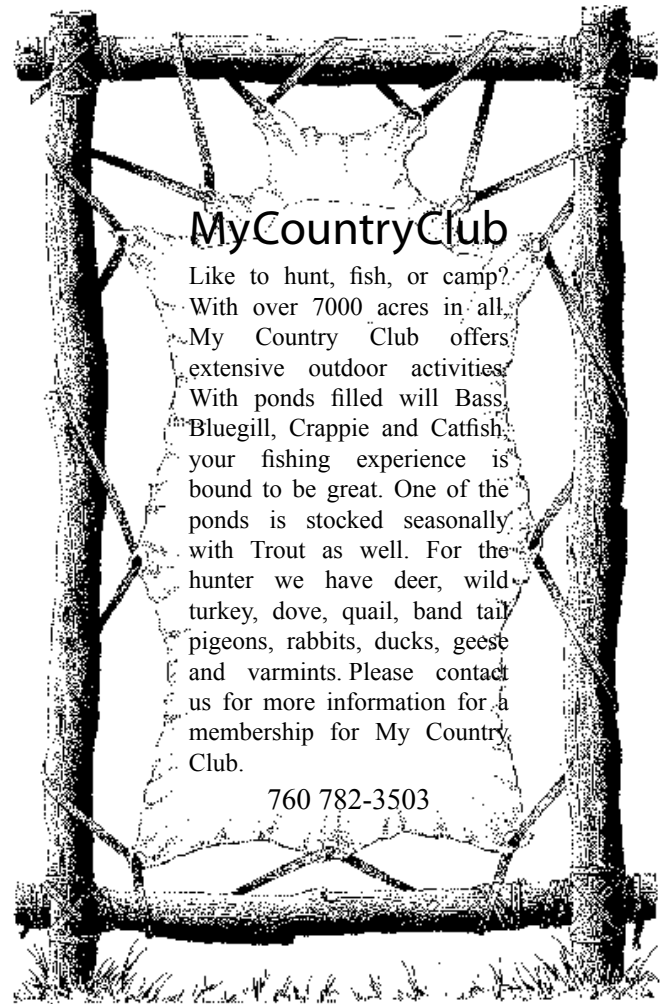
Santa Ysabel, CA 92070

760 782-2729

Breakfast * Lunch * Dinner

Sunday – Thursday 7am to 7pm

Friday and Saturday 7am to 8pm



Lake Henshaw Resort

Wow, what a ride! Three short years ago we took over the management of the Resort. Thanks to so many of you, we have things running smoothly and appreciate your business. We really love it at the Lake and have made many needed changes along the way. You're invited to come on down for year-round fishing, browse our store, or you might have an event coming up that would be perfect to have at our clubhouse!

In the summer we have live music around the campfire for dancing under the stars. Last year we had several neighbors from the mountain camp over night when the band was here. We have lots of room for YOU to join us too!

See you at the lake.

Frank and Janice Mendenhall

www.lakehenshawresort.com

760 782-3501



Oak Knoll Campground

Hello Neighbors! You are invited to stop by Oak Knoll. To many of you, we may be a well kept secret that you drive by on your way up and down the mountain at the base of the South Grade Road. We encourage you to come on in, browse in our store, or you might want to see our clubhouse to use for your next event. Our pool is open to Mountain residents and we also have propane available for sale.

On Saturday nights in the summer, you are welcome to come and sit around our campfire starting at 8:00pm. We often have live music with Larry on the guitar, and sometimes show a movie under the stars.

Gate hours are from 8am to 5pm Sunday through Thursday, and 8 to 9 Friday and Saturday. Looking forward to meeting you at Oak Knoll or out and about around the Mountain.

Larry and Elizabeth

www.oakknoll.net

760 742-3437



PMPO Needs Your Financial Support...

All property owners, residents, and any parties interested in the Palomar community are members of the Palomar Mountain Planning Organization. PMPO is recognized by both Federal and State Taxing Authorities as a tax-exempt organization. This means that your gifts are income tax deductible.

If you have followed our activities over the years, you know we get a big bang for each buck. There are large threats on the horizon most of the time. We need to be ready. Your financial support represents our readiness. We study issues of importance to Palomar Mountain and communicate them to our community along with involved governmental agencies. These efforts have produced significant results.



Palomar Mountain Planning Organization -- 2006 Contribution --

RETURN TO:
PMPO, Box 145
PALOMAR MOUNTAIN, CA 92060-0145
PMPO IS RECOGNIZED BY FEDERAL
AND STATE AUTHORITIES
AS A TAX EXEMPT ORGANIZATION (501-(c)3).
YOUR CONTRIBUTIONS ARE TAX DEDUCTIBLE.

NAME: _____

ADDRESS: _____

PHONE: _____

EMAIL: _____

I AM CONTRIBUTING: \$ _____

2005-2006 PMPO Volunteer Recognition

Chairman:
Bruce Graves
Secretary:
Michael Pique
Treasurer:
Tracy Dixon
Dual Survey Project:
Jack Norvall/Michael Pique/
Robert Haase
Newsletter Coordinator:
Susan Humason
Yale Water Pumping Project:
Libby Getzoff/Michael Pique
Mailing List:
Bonnie Phelps
County Liaison/Consultant:
Jerry McLees
2020 County Plan:
Tom Burton
Annual Pancake Breakfast:
Donna Dose

Thanks to
All of You
for your ongoing
dedication
and
support
to the
Palomar
Mountain
Planning
Organization
to help better our
Community!

Bailey's Palomar Resort

Since 1888

Camping • Lodging • Events



For over a century now, folks have been coming up to Bailey's for a special slice of San Diego's back country.

Bailey's sixty-acre mountaintop environment is a unique blend of cool forest and rich meadow.

The historic General Store, Dance Hall, and the newly restored Hotel provide an authentic look and feel to a valley that has changed little over the last 100 years.

Lodging at the Bailey House, camping, and cabin rentals are available.

Let Us Help You Plan Your Next Event

760-742-1859

www.BaileysPalomarResort.com

Palomar Mountain Planning Organization
P.O. Box 145
Palomar Mountain, CA 92060-0145

RETURN SERVICE REQUESTED

Annual Pancake Breakfast & PMPO Annual Meeting

Breakfast 8am-11am • Annual Meeting immediately follows Breakfast

Saturday, May 27th, 2006

at the Palomar Mountain Fire Department

Come on out, meet your neighbors, enjoy a delicious breakfast and hear about what's happening on Palomar!

\$2.00 - Adults
\$1.00 - Children

Breakfast Menu:
Fresh orange juice, strawberries,
hot mountain pancakes,
bacon & sausage and steaming coffee

