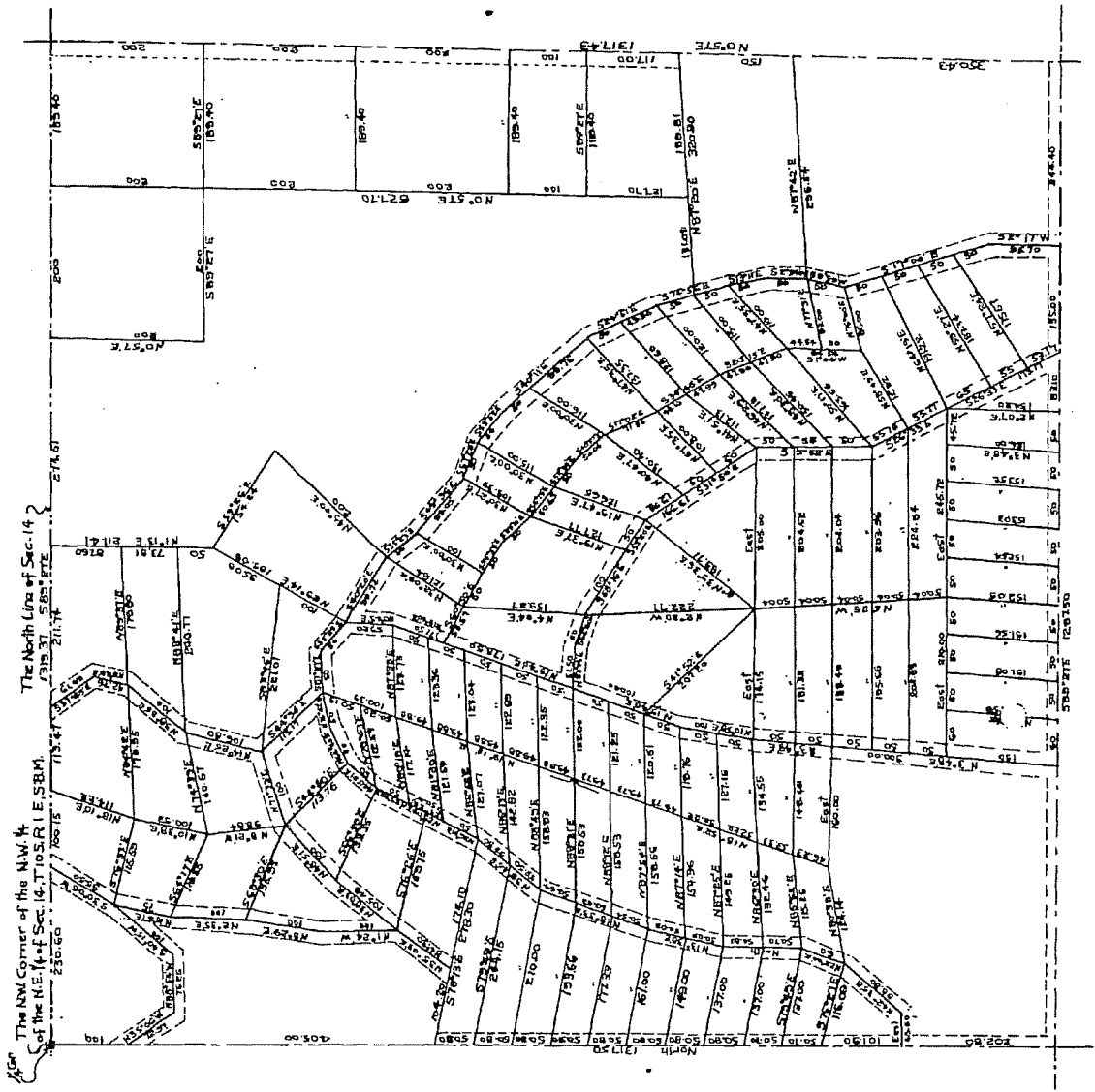


ASSESSOR'S MAP * 11



ASSESSOR'S MAP NO. 11

Showing Portions of the NW 1/4 of the NE 1/4 of Section 14, T. 10S., R. 1E., S.B.M.,
County of San Diego, State of California.

NOTE: - This MAP is to be used for Assessment Purposes only

This is to certify that the attached Map was compiled and approved by
The Board of Supervisors of San Diego County, California, on this 17th
Day of March 1930, at the Official Assessor's Map No. 11
Showing Portions of the NW 1/4 of the NE 1/4 of Section 14,
T. 10S., R. 1E., S.B.M.

Approved: *Walter M. Newton*
Assessor, County of San Diego, California

In Witness Whereof, We being a majority of the Board of Supervisors of the County of San Diego,
State of California, the Presiding Officer and Secretary (Clerk) thereof, have hereunto set our
hands and affixed our Official Seal on this 17th Day of March 1930.

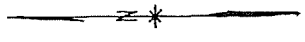
Walter M. Newton
Chas. L. Wood
John H. Ferry
John H. Ferry

Chas. L. Wood
Chairman of the Board of Supervisors
County of San Diego, California

John H. Ferry
County Clerk and Ex-officio Clerk of The Board of Supervisors
San Diego, California
By: *W. M. Newton* Deputy

FILE NO 14519
Filed of record of County Assessor
at 5 Minutes Past 10 O'clock A.M.
this 24th Day of March 1930

John H. Ferry
County Recorder, County of San Diego,
California
By: *W. M. Newton* Deputy



Scale: 1" = 100'
Walter H. Chase, Civil Eng.
San Diego, Calif.